

CITY OF FRANKLIN
QUARRY MONITORING COMMITTEE*
MEETING AGENDA

Franklin City Hall, Hearing Room
9229 West Loomis Road, Franklin, Wisconsin 53132
Tuesday, May 14, 2024, 6:00 p.m.

- I. Call to Order, Roll Call and Pledge of Allegiance
- II. Approval of Minutes
 - a. Regular meeting of February 13, 2024.
- III. Citizen Comment Period
PLEASE NOTE: Each speaker may need to be limited to three minutes, allowing everyone who wishes the opportunity to speak
- IV. Business (Action may be taken on any item)
 - a. Selection of chair and vicechair.
 - b. Quarterly presentation by Stantec Consulting Services, Inc., 1st quarter of calendar year 2024 (January-March).
 - c. Review and discussion on matters pertaining to citizen complaints, blasting data from Payne & Dolan and Stantec (the City's consultant).
 - d. Payne & Dolan biannual report (2022-2023).
- V. Meeting scheduling discussion
- VI. Adjournment

** Notice is given that a majority of the Common Council may attend this meeting to gather information about an agenda item over which the Common Council has decision-making responsibility. This may constitute a meeting of the Common Council per State ex rel. Badke v. Greendale Village Board, even though the Common Council will not take formal action at this meeting.*

Notice is further given that upon reasonable notice, efforts will be made to accommodate the needs of disabled individuals through appropriate aids and services. For additional information, please contact the Franklin City Clerk's office at (414) 425-7500.

City of Franklin
Quarry Monitoring Committee Meeting
Inspection Conference Room, Franklin City Hall
6:00 PM
February 13, 2024
Minutes

I. CALL TO ORDER

The February 13, 2024, Quarry Monitoring Committee meeting was called to order by Alderman Mike Barber at 6:00 p.m. in the Inspection Conference Room at City Hall.

Chair Alderman Mike Barber, Vice-Chair Dina Swanson and member Edward Pings were present. Alderman Yousef Hasan and member Jon TenHaken were excused. Also present were Principal Planner Régulo Martínez-Montilva, Kristen Gunderson-Inden of Stantec Consulting Services, Bryanna Bucholtz and Wes Hinline of Payne & Dolan.

II. APPROVAL OF MINUTES

a. Regular meeting of October 24, 2023

Member Pings moved and Vice Chair Swanson seconded to approve the minutes as presented. On voice vote, all present voted 'aye'; the vote was 3-0-2, motion carried.

III. CITIZEN COMMENT PERIOD

Citizen comment period opened at 6:03 p.m. and closed at 6:03 p.m. No comments.

IV. BUSINESS

a. Quarterly presentation by Stantec Consulting Services, Inc., 4th quarter of calendar year 2023 (October-December).

Kristen Gunderson-Inden presented the 4th quarterly report. No action taken.

b. Review and discussion on matters pertaining to citizen complaints, blasting data from Payne & Dolan and Stantec (the City's consultant).

Principal Planner Martinez-Montilva presented. No action taken.

c. Status update on quarry monitoring scope of services for calendar year 2024.

Principal Planner Martinez-Montilva presented. No action taken.

V. SCHEDULE NEXT MEETING

Next meeting is scheduled for May 14, 2024.

VI. ADJOURNMENT

Member Pings moved and Vice Chair Swanson seconded to adjourn the February 13, 2024 Quarry Monitoring Committee meeting at 6:18 p.m. All present voted 'aye'; motion carried.

DRAFT



Stantec Consulting Services Inc.
12080 Corporate Parkway, Suite 200
Mequon, Wisconsin 53092
Tel: (262) 241-4466

April 30, 2024

Regulo Martínez-Montilva
Principal Planner - Department of City Development
City of Franklin
9229 W. Loomis Road
Franklin, Wisconsin 53132
RMartinez-Montilva@franklinwi.gov

Reference: City of Franklin, WI – Franklin Aggregates Quarry Monitoring Summary
Period: 1st Quarter 2024
Stantec Project: 193710393

Dear Mr. Martínez-Montilva:

The enclosed information summarizes monitoring activities completed during the first quarter of 2024 by Stantec Consulting Services Inc. (Stantec) pertaining to the Franklin Aggregates, Inc. quarry (owned by Payne & Dolan, Inc.) located at 6211 W. Rawson Avenue, Franklin, Wisconsin (the Quarry). Stantec was retained by the City of Franklin to conduct a combination of direct observation (visual) monitoring, seismic monitoring of the quarry operations, and evaluation of citizen complaints. Separate description of services and project background are provided in **Attachments A and B**, respectively. This letter summarizes the results.

Direct Observation (Visual) Monitoring

Copies of completed observation forms are prepared and posted to the project Teams site for review by City representatives. Copies of individual reports are not provided with this summary report.

One observation event was completed during the monitoring period. An unannounced inspection was completed on March 4, 2024. The street sweeper was observed in use on Rawson Avenue during the site visit. Minor dust was observed from trucks exiting to the east on Rawson Avenue during the visit.

Seismic Monitoring

As contracted by the City, Stantec provided remote vibration monitoring using two seismographs co-located with two existing Payne & Dolan (Vibra-Tech) monitors at 7301 S. 51st Street (VT1 and S1) and 5800 W. Allwood Drive (VT4 and S2). The monitoring provides continuous (24/7) remote monitoring. Payne & Dolan also has monitors at 7526 S. 51st Street (VT2) and southeast of the quarry (VT3). Summaries of blasting data, comparing the Payne & Dolan unit recordings to the Stantec (Sauls Seismic) unit recordings, were prepared for the quarter, and are presented in **Attachment C. Figure 1** illustrates the locations of the blasts in the quarter.

Highlights of the seismic data include the following:

- Between January 1 and March 31, 2024, a total of 12 blasting events occurred. 8 of 12 (67%) of these blasts were confirmed by the Stantec monitors.
- Per the Planned Development District agreements (PDD), 85% of the quarry's blasts within any calendar year must be below the maximum permissible vibration (of 0.30 inches per second (in/sec), measured at the closest residence or inhabited structure not owned or controlled by the quarry. This is more stringent than State of Wisconsin regulations which require quarry operators to report any ground vibration levels to the Wisconsin Department of Natural Resources (WDNR) that are above 0.75 in/sec.

- None of the blasting events measured by Payne & Dolan or Stantec had a vibration greater than 0.30 in/sec. Thus 100% of the quarry's blasts this quarter and year to date were below this level. This is in conformance with the PDD.
- Per the PDD, airblast resulting from P&D blasting shall not exceed 123 dB on at least 85% of its blasts within any single calendar year, measured at the residence or inhabited structure closest to the site of the blast which is not owned or controlled by the Operator. Notwithstanding any other provision in this subsection, the Operator shall not exceed the airblast limitation imposed by Wis. Adm. Code, SPS Ch. 307.
 - None of the blasting events measured by Payne & Dolan or Stantec had an air overpressure (AO) greater than 123dB. Thus 100% of the quarry's blasts this quarter and year to date were below this level. This is in conformance with the PDD.
- The corresponding blast data measured by Stantec with the Sauls Seismic monitors generally aligned with the readings at each Payne & Dolan sponsored Vibra-Tech monitors. There were some larger differences in the AO and frequency readings. It should be noted that in addition to the fact the monitors are produced by different manufacturers, there are a variety of variables that can influence actual readings. The Sauls Seismic monitors were swapped out and recalibrated in late July 2023 by the equipment vendor; calibration is typically completed annually.
- In general, the largest blast readings at each monitor appear to correlate with the proximity of the nearest adjacent blast location.

Blast Complaint Evaluation

A compilation of all blast events and complaints received by Stantec for the period January 1 through March 31, 2023, is provided as **Attachment C**. Note that Attachment C does not provide the actual complainant details (name, address, and phone number) if known; it was decided to have this information remain confidential in this report. However, complainant identity may be released upon public records request to the City of Franklin. The locations of all blasts and complaints are shown on **Figure 1**. The following highlights the results of the complaint evaluation:

Complaints - General

- 1 complaints (formally submitted)
- 4 complaints (informally submitted – phone call only)
- 0 complaints – regarding noise
- 1 complaints – regarding dust
- 4 complaints – regarding vibration

Complaints – Blast Related

- 4 complaints – corresponding to actual blast events
- 0 complaints – not corresponding to specific blast events
- 4 complaints – complainant location identified
 - 2 households that complained once this quarter

- 1 household that complained twice this quarter

Complaints (non-anonymous; confirmed blast related) - Locations

- 0 complaints – east of 51st Street
- 4 complaints – south of Drexel Avenue
- 0 complaints – west of Root River

Summary of Complaint Comments – Blast Related

- January 3, 2024 (highest readings at the 7301 S 51st St monitor – 0.018 in/sec PPV, 111 db AO, not detected at the 5800 Allwood monitor) – one complaint to the south – blast in northern pit. This was an informal complaint.
 - Phone call only. No details provided.
- February 16, 2024 ((highest readings at the 5800 Allwood monitor– 0.163 in/sec PPV, 118 db AO) – two complaints to the south – blast in southern pit. One formal complaint, one informal complaint.
 - “Blasting felt like it went from one end of our house to the other.” (formal complainant)
 - Phone call only. No details provided. (informal complainant)
- March 13, 2024 (highest readings at the highest readings at the 7526 S 51st St monitor – 0.0625 in/sec PPV, 119 db AO) – one complaint to the south – blast in southern pit. This was an informal complaint.
 - Phone call only. No details provided.

Summary of Complaint Comments – Non-Blast Related

- The City of Franklin received a phone call on February 2, 2024 complaining about dirty roads by Payne & Dolan and requested they sweep the road. The caller did not want to complete a formal complaint form.

Blast Events

- 12 blast events - during monitoring period 1Q2024 (shot numbers 1 through 12)
- 3 blast events - corresponding to complaints
 - 0 weather: rain
 - 2 weather: haze, partly to mostly cloudy, or cloudy
 - 1 weather: clear, fair, or scattered clouds
 - 2 time: prior to 12:00 pm (noon)
 - 1 time: after 12:00 pm
- 2 blast events with one complaint
- 1 blast event with two complaints

Quarry Blast Locations Producing Complaints

- 2 southern area of quarry

April 30, 2024

Page 4 of 4

Reference: City of Franklin, WI – Franklin Aggregates Quarry Monitoring Summary Period: 1Q2024

- 0 central area of quarry
- 1 northern area of quarry

Upon review of these results outlined above, on Figure 1, and in Attachment C, the following observations are made:

- There was one quarry operational complaint made regarding dust on road in February. Most complaints focus on quarry blasting and resulting ground vibrations.
- One blast this quarter had more than one complaint.
- One address this quarter has complained more than once so far year to date (once each in February and March – both were informal complaints).
- No complaints came from east of South 51st Street.
- No complaints came from west of the Root River.

Please feel free to contact Mike Roznowski at 920-278-3200 or mike.roznowski@stantec.com; or Kristen Gunderson-Inden at 262-665-3447 or kristen.gunderson-inden@stantec.com if you have any questions.

Respectfully,

STANTEC CONSULTING SERVICES INC.



Kristen Gunderson-Inden
Senior Environmental Scientist



Michael B. Roznowski, CHMM
Senior Principal

Attachments A - Franklin Quarry Seismic Monitoring Description of Services
 B - Franklin Quarry Seismic Monitoring Project Background
 C - Summary of Seismic Data – 1st Quarter 2024
 Figure 1 - Seismic Monitoring, Blasting, and Complaint Locations, 1st Quarter 2024

ATTACHMENT A

FRANKLIN QUARRY SEISMIC MONITORING DESCRIPTION OF SERVICES

DESCRIPTION OF SERVICES

Direct Observation (Visual) Monitoring

During 2024, Stantec will conduct a total of sixteen (16) qualitative site visits at the quarry to observe and document whether the site was compliant with operational parameters defined in the existing Planned Development District (PDD) agreements, and to evaluate whether the quarry's general operations are consistent with best management practices employed by other similar quarries. Site visits are a combination of announced and unannounced, but all are conducted during normal business hours. The days of the week and times of the day for the visits vary. The observations are planned to be completed between April and October, when quarry operations are occurring, and airborne dust is more likely. Qualitative data to be collected includes the following:

- Visual observation of all aspects of the mining operation, including but not limited to:
 - Trucking operations, in particular pertaining to dust issues along Rawson Avenue
 - Operational issues that may affect local citizens in some form of adverse off-site impact
- Direct air quality observations, including:
 - General site and surrounding visual air quality, including opacity, in particular along Rawson Avenue
 - Dust control measures and issues on-site that may affect off-site receptors
 - Dust control issues directly adjacent off-site
 - Any other dust issues that may affect local citizens
- Quarry operations review (for announced visits), including:
 - Review of quarry records pertaining to dust control measures and recordkeeping, ensuring that the operator is following standard protocol to minimize off-site impacts, and evaluating how well and how quickly they respond to potential of actual off-site impact situations
 - Comparison of records to stated performance objectives and respective PDD compliance, only as they pertain to dust in general, and along Rawson Avenue in particular

The findings of each visit will be documented on a standard form previously approved by the City. The form will be filled out by hand during each site visit, and then scanned/posted to a project SharePoint site for review by City representatives. Stantec also will obtain photos to document site or directly adjacent off-site conditions, and short-duration video clips (e.g., showing dust impacts). These photos and videos are also uploaded to the project SharePoint site.

In addition to the observations and record review, Stantec also will obtain and document on the inspection forms local meteorological conditions that were relevant to the observations (e.g., temperature, wind speed, wind direction, humidity, and precipitation).

Stantec also will notify the City Planning Manager of any condition (pertaining to air or dust monitoring, or other PDD condition) that we become aware of that exceeds the allowances outlined in the PDD. This communication will be completed prior to noon the business day following the day we become aware of any such event.

Seismic Monitoring

Stantec provides remote vibration monitoring by using Nomis Seismographs. Sauls Seismic is subcontracted to operate two separate seismographs, each co-located with two existing Payne & Dolan (Vibra-Tech) monitors located at: 7301 S. 51st Street, and 5800 W. Allwood Drive. Each monitor was pole-mounted and provided with a weatherproof enclosure. Power is provided via an internal battery and an external battery connected to a solar panel. This type of configuration provides continuous (24/7) remote monitoring, allowing Stantec to have access to data anytime via the Internet.

Stantec also will notify the City Planning Manager of any condition (pertaining to blasting, noise or other PDD condition) that we become aware of that exceeded the allowances outlined in the PDD. This communication will be completed prior to noon the business day following the day we become aware of any such event.

Blast Complaint Evaluation

Periodically the City forwards to Stantec specific information pertaining to quarry complaints received. Stantec evaluates each one on a quarterly basis to determine the following corresponding collaborative conditions:

- Off-site dust complaints: weather conditions (wind direction and speed) the day of the complaint
- Off-site seismic complaints: seismic data from both Stantec (if monitoring at the time) and Payne & Dolan placed monitors
- On occasion, the City may request an exceptional blast complaint evaluation if a blast event receives an unusually high number of complaints. A letter report will be issued by Stantec within approximately one week of the request that describes:
 - seismic data from both Stantec and Payne & Dolan placed monitors
 - weather conditions (wind direction and speed) the day of the complaint
 - a figure showing location of blast and complaints

ATTACHMENT B

FRANKLIN QUARRY SEISMIC MONITORING PROJECT BACKGROUND

Background Summary

Seismic monitoring was completed to document whether the site was compliant with operational parameters defined in the existing Planned Development District (PDD) agreements. Prior to 2018, Stantec completed a variety of 2, 4, and 8-week seismic monitoring periods. During 2018, Stantec completed one 4-week period and one 16-week period of monitoring. Monitoring consisted of placing a city owned and maintained Instantel MiniMate Plus fixed seismograph equipped with an external geophone at one of two city-established blast monitoring sites or vaults for each period. Seismic data was downloaded once every two weeks. Due to equipment limitations the data could not be downloaded remotely as it occurs (i.e., real time).

In 2019, Stantec provided remote vibration monitoring by using Nomis Seismographs. Sauls Seismic was subcontracted to install two separate seismographs, each co-located with two existing Payne & Dolan (Vibra-Tech) monitors located at: 7301 S. 51st Street, and 5800 W. Allwood Drive. Each monitor was pole-mounted and provided with a weatherproof enclosure. Power was provided via an internal battery and an external battery connected to a solar panel. This type of configuration provided continuous (24/7) remote monitoring, allowing Stantec to have access to data anytime via the Internet.

As contracted by the City for 2024, Stantec is providing remote vibration monitoring using two seismographs co-located with two existing Payne & Dolan (Vibra-Tech) monitors at 7301 S. 51st Street and 5800 W. Allwood Drive. The monitors provided continuous (24/7) remote monitoring. Quarterly summaries of blasting data, comparing the Payne & Dolan (Vibra-Tech) unit recordings, to the Stantec (Sauls Seismic) unit recordings, will be prepared for the calendar year.

Per the PDD #23 and #24 Ordinances, 85% of the quarry's blasts within any calendar year must be below the maximum permissible vibration (also referred to as particle or ground velocity) of 0.30 inches per second (in/sec), measured at the closest residence or inhabited structure not owned or controlled by the quarry. This is more stringent than State of Wisconsin regulations (Wisconsin Department of Industry, Labor and Human Relations in ch.ILHR 7, Wis. Adm. Code on any blast [new reference now Wis. Adm. Code, Safety and Professional Services (SPS) Chapter 307]) which require quarry operators to report any ground vibration levels to the Wisconsin Department of Natural Resources that are above 0.75 in/sec.

Per the PDD #23 and #24 Ordinances, airblast resulting from P&D blasting shall not exceed 123 dB on at least 85% of its blasts within any single calendar year, measured at the residence or inhabited structure closest to the site of the blast which is not owned or controlled by the Operator. Notwithstanding any other provision in this subsection, the Operator shall not exceed the airblast limitation imposed by Wis. Adm. Code, SPS Ch. 307.

In addition to obtaining and reviewing the blast data from the city-owned, fixed seismograph, Stantec also received data from Payne & Dolan's Vibra-Tech meters, which provided independently monitored Franklin Aggregate blasting data for the entire calendar year. Four monitors are used by Vibra-Tech, three along South 51st Street, and one just south of West Drexel Avenue. This independently monitored data was compared to the Stantec-obtained data.

ATTACHMENT C

SUMMARY OF SEISMIC DATA – 1st QUARTER 2024

FIGURE 1

SEISMIC MONITORING, BLASTING, AND COMPLAINT LOCATIONS, 1st QUARTER 2024

V:\1937\Active\19370943303_data\gis_cad\fig\mxd\2024_1st_Quarter_Report\fig_1_Seismic_Complaints_193707487.mxd Revised: 2024-04-15 By: aswaim

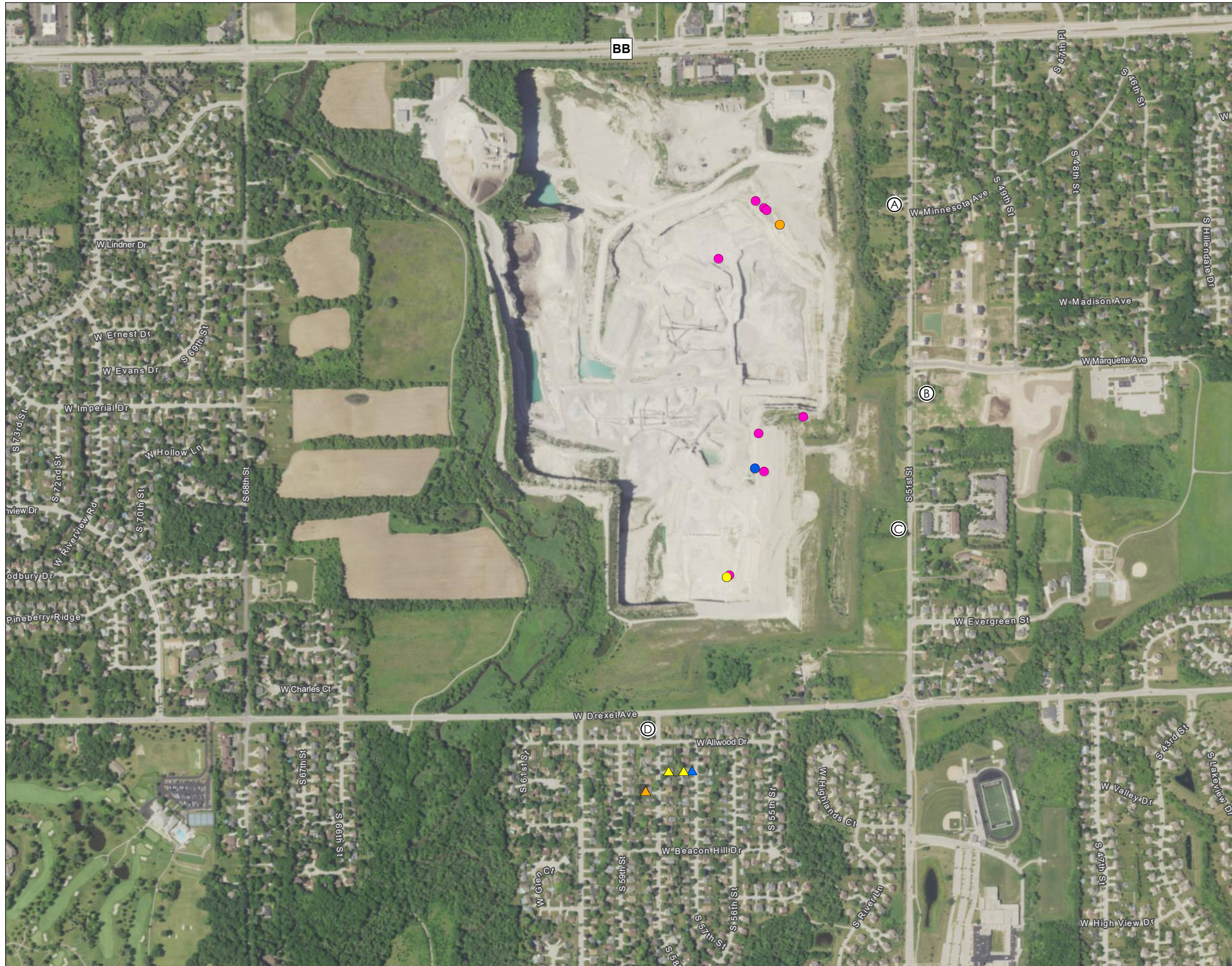


Figure No.

1

Title

Seismic Monitoring, Blasting, and Complaint Locations - 1st Quarter 2024

Client/Project
City of Franklin
Vicinity of Payne and Dolan Quarry

193710393

Project Location
C. of Franklin, Milwaukee Co., WI

Prepared by AJS on 2024-04-12
TR by DG on 2024-04-12
IR by KGI on 2024-04-12



0 400 800 Feet
(At original document size of 11x17)
1:9,600

Legend

Seismic Monitoring Location

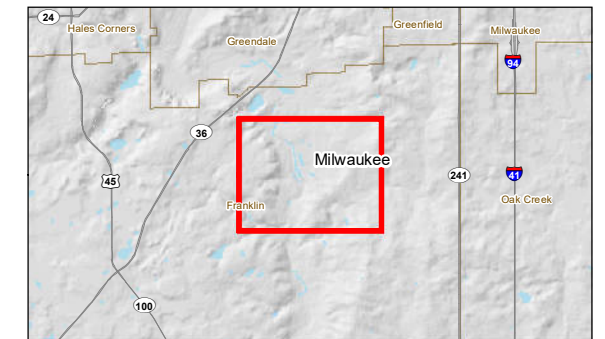
- (A) Vibra-Tech(VT1) and Stantec(S1)
- (B) Vibra-Tech(VT2)
- (C) Vibra-Tech(VT3)
- (D) Vibra-Tech(VT4) and Stantec(S2)

Blast Location

- Non-complaint Blast Location
- Blast #1
- Blast #5
- Blast #7

Blast Complaint

- ▲ Blast #1
- ▲ Blast #5
- ▲ Blast #10



Notes

1. Coordinate System: NAD 1983 StatePlane Wisconsin South FIPS 4803 Feet
2. Data Sources: Stantec, SCO, WDNR, WisDOT
3. Orthophotography: 2022 NAIP





Welcome City of Franklin

[Logout](#)

- [Home/View](#)

Show entries

Search:

Date	Time	Shot #	Seismo Loc	PPV	AO
5/06/2024	11:09 am	18	Franklin Quarry (5800 ALLWOOD)	0.025	108
5/06/2024	11:09 am	18	Franklin Quarry (SE of Quarry)	0.037	112
5/06/2024	11:09 am	18	Franklin Quarry (7526 S. 51st Street)	0.087	117
5/06/2024	11:09 am	18	Franklin Quarry (7301 S 51st Street)	0.070	119
4/30/2024	10:58 am	17	Franklin Quarry (5800 ALLWOOD)	N/T	N/T
4/30/2024	10:58 am	17	Franklin Quarry (SE of Quarry)	0.107	110
4/30/2024	10:58 am	17	Franklin Quarry (7301 S 51st Street)	0.045	112
4/30/2024	10:58 am	17	Franklin Quarry (7526 S. 51st Street)	0.145	110
4/18/2024	1:24 pm	16	Franklin Quarry (5800 ALLWOOD)	0.022	111
4/18/2024	1:24 pm	16	Franklin Quarry (SE of Quarry)	0.095	116
4/18/2024	1:24 pm	16	Franklin Quarry (7301 S 51st Street)	0.040	111
4/18/2024	1:24 pm	16	Franklin Quarry (7526 S. 51st Street)	0.177	116
4/16/2024	9:45 am	15	Franklin Quarry (5800 ALLWOOD)	N/T	N/T
4/16/2024	9:45 am	15	Franklin Quarry (SE of Quarry)	N/T	N/T
4/16/2024	9:45 am	15	Franklin Quarry (7526 S. 51st Street)	N/T	N/T
4/16/2024	9:45 am	15	Franklin Quarry (7301 S 51st Street)	N/T	N/T
4/09/2024	8:30 am	14	Franklin Quarry (5800 ALLWOOD)	N/T	N/T

Date	Time	Shot #	Seismo Loc	PPV	AO
4/09/2024	8:30 am	14	Franklin Quarry (7301 S 51st Street)	N/T	N/T
4/09/2024	8:39 am	14	Franklin Quarry (SE of Quarry)	0.045	105
4/09/2024	8:39 am	14	Franklin Quarry (7526 S. 51st Street)	0.065	112
4/08/2024	11:37 am	13	Franklin Quarry (5800 ALLWOOD)	N/T	N/T
4/08/2024	11:32 am	13	Franklin Quarry (SE of Quarry)	0.033	103
4/08/2024	11:32 am	13	Franklin Quarry (7301 S 51st Street)	0.168	112
4/08/2024	11:32 am	13	Franklin Quarry (7526 S. 51st Street)	0.062	114
3/20/2024	10:22 am	12	Franklin Quarry (5800 ALLWOOD)	0.022	113
3/20/2024	10:22 am	12	Franklin Quarry (7301 S 51st Street)	0.068	119
3/20/2024	10:21 am	12	Franklin Quarry (SE of Quarry)	0.045	116
3/20/2024	10:21 am	12	Franklin Quarry (7526 S. 51st Street)	0.062	119
3/13/2024	12:50 pm	11	Franklin Quarry (5800 ALLWOOD)	N/T	N/T
3/13/2024	12:50 pm	11	Franklin Quarry (7301 S 51st Street)	N/T	N/T
3/13/2024	12:51 pm	11	Franklin Quarry (SE of Quarry)	0.087	108
3/13/2024	12:50 pm	11	Franklin Quarry (7526 S. 51st Street)	0.150	110
3/11/2024	11:10 am	10	Franklin Quarry (5800 ALLWOOD)	0.022	109
3/11/2024	11:10 am	10	Franklin Quarry (SE of Quarry)	0.072	110
3/11/2024	11:10 am	10	Franklin Quarry (7301 S 51st Street)	0.050	111
3/11/2024	11:10 am	10	Franklin Quarry (7526 S. 51st Street)	0.072	115
3/06/2024	11:30 am	9	Franklin Quarry (5800 ALLWOOD)	N/T	N/T
3/06/2024	11:32 am	9	Franklin Quarry (SE of Quarry)	0.070	110
3/06/2024	11:32 am	9	Franklin Quarry (7301 S 51st Street)	0.033	99
3/06/2024	11:32 am	9	Franklin Quarry (7526 S. 51st Street)	0.072	107
3/04/2024	11:38 am	8	Franklin Quarry (5800 ALLWOOD)	0.035	105

Date	Time	Shot #	Seismo Loc	PPV	AO
3/04/2024	11:38 am	8	Franklin Quarry (SE of Quarry)	0.083	104
3/04/2024	11:38 am	8	Franklin Quarry (7301 S 51st Street)	0.035	104
3/04/2024	11:38 am	8	Franklin Quarry (7526 S. 51st Street)	0.092	109
3/01/2024	12:31 pm	7	Franklin Quarry (5800 ALLWOOD)	0.035	108
3/01/2024	12:31 pm	7	Franklin Quarry (7301 S 51st Street)	0.033	112
3/01/2024	12:31 pm	7	Franklin Quarry (SE of Quarry)	0.138	110
3/01/2024	12:31 pm	7	Franklin Quarry (7526 S. 51st Street)	0.075	109
2/22/2024	9:45 am	6	Franklin Quarry (5800 ALLWOOD)	N/T	N/T
2/22/2024	9:45 am	6	Franklin Quarry (SE of Quarry)	N/T	N/T
2/22/2024	9:49 am	6	Franklin Quarry (7526 S. 51st Street)	0.055	108
2/22/2024	9:49 am	6	Franklin Quarry (7301 S 51st Street)	0.113	107
2/16/2024	12:32 pm	5	Franklin Quarry (7301 S 51st Street)	N/T	N/T
2/16/2024	12:32 pm	5	Franklin Quarry (SE of Quarry)	0.120	114
2/16/2024	12:32 pm	5	Franklin Quarry (7526 S. 51st Street)	0.058	116
2/16/2024	12:32 pm	5	Franklin Quarry (5800 ALLWOOD)	0.065	112
2/12/2024	12:30 pm	4	Franklin Quarry (5800 ALLWOOD)	N/T	N/T
2/12/2024	12:24 pm	4	Franklin Quarry (SE of Quarry)	0.033	112
2/12/2024	12:24 pm	4	Franklin Quarry (7526 S. 51st Street)	0.060	114
2/12/2024	12:24 pm	4	Franklin Quarry (7301 S 51st Street)	0.175	118
2/01/2024	12:15 pm	3	Franklin Quarry (7301 S 51st Street)	N/T	N/T
2/01/2024	12:18 pm	3	Franklin Quarry (5800 ALLWOOD)	0.065	115
2/01/2024	12:18 pm	3	Franklin Quarry (SE of Quarry)	0.135	109
2/01/2024	12:18 pm	3	Franklin Quarry (7526 S. 51st Street)	0.080	107
1/08/2024	11:51 am	2	Franklin Quarry (7301 S 51st Street)	N/T	N/T

Date	Time	Shot #	Seismo Loc	PPV	AO
1/08/2024	11:51 am	2	Franklin Quarry (5800 ALLWOOD)	0.072	111
1/08/2024	11:51 am	2	Franklin Quarry (SE of Quarry)	0.100	112
1/08/2024	11:51 am	2	Franklin Quarry (7526 S. 51st Street)	0.070	110
1/03/2024	12:30 pm	1	Franklin Quarry (5800 ALLWOOD)	N/T	N/T
1/03/2024	12:28 pm	1	Franklin Quarry (SE of Quarry)	0.025	111
1/03/2024	12:28 pm	1	Franklin Quarry (7301 S 51st Street)	0.185	111
1/03/2024	12:28 pm	1	Franklin Quarry (7526 S. 51st Street)	0.062	115
12/19/2023	12:30 pm	57	Franklin Quarry (5800 ALLWOOD)	N/T	N/T
12/19/2023	12:30 pm	57	Franklin Quarry (SE of Quarry)	N/T	N/T
12/19/2023	12:30 pm	57	Franklin Quarry (7301 S 51st Street)	N/T	N/T
12/19/2023	12:25 pm	57	Franklin Quarry (7526 S. 51st Street)	0.048	119
12/08/2023	2:20 pm	56	Franklin Quarry (5800 ALLWOOD)	N/T	N/T
12/08/2023	2:20 pm	56	Franklin Quarry (SE of Quarry)	N/T	N/T
12/08/2023	2:20 pm	56	Franklin Quarry (7301 S 51st Street)	0.080	115
12/08/2023	2:20 pm	56	Franklin Quarry (7526 S. 51st Street)	0.043	112
12/04/2023	11:56 am	55	Franklin Quarry (5800 ALLWOOD)	N/T	N/T
12/04/2023	11:56 am	55	Franklin Quarry (SE of Quarry)	0.028	102
12/04/2023	11:56 am	55	Franklin Quarry (7301 S 51st Street)	0.150	104
12/04/2023	11:56 am	55	Franklin Quarry (7526 S. 51st Street)	0.085	109
11/28/2023	1:12 pm	53	Franklin Quarry (5800 ALLWOOD)	N/T	N/T
11/28/2023	1:12 pm	53	Franklin Quarry (SE of Quarry)	0.045	104
11/28/2023	1:12 pm	53	Franklin Quarry (7526 S. 51st Street)	0.120	110
11/28/2023	1:12 pm	53	Franklin Quarry (7301 S 51st Street)	0.223	109
11/28/2023	1:19 pm	54	Franklin Quarry (5800 ALLWOOD)	N/T	N/T

I. Site History

- Franklin Aggregate has been in operation since the mid 1940's.
- Payne & Dolan has owned and operated the Franklin Aggregate location since 1983.
- The quarry was operated by Payne & Dolan and Vulcan Materials until June of 2013, when the Vulcan Franklin quarry was purchased by Payne & Dolan. Payne & Dolan is now the sole operator.
- Payne & Dolan operates the quarry in accordance with two (2) Planned Development Districts (PDD), PDD #23 (#97-1456) and PDD #24 (#97-1457), approved by the City Common Council in 1997.

II. Quarry Operations

- Quarry operations include stripping, blasting, crushing, washing and load out of material.
- Limestone was extracted in two areas of the quarry as shown in Figure 3 below.
- Crushing has continued in the quarry and typically occurs from approx. early March to mid-December. However, due to the high demand in the local area, one of the crushing plants did not shut down for the winters of 2021 – 2022 and 2022 – 2023 and continued thru the end of the year.
- Quarry operations may be conducted from 6:30 AM – 7:00 PM Monday thru Friday, 7:00 AM – 4:00 PM on Saturdays and no operations on Sundays or various holidays as specified in the PDDs. Hours of operation for blasting and the asphalt plants are different and listed later in other sections.
- Majority of the load out of materials utilized the west entrance along Rawson Avenue, with limited use of the east entrance. Load out occurs throughout the year with reduced hours in the construction off-season.
- Quarry operations continue to include crushing and most of the load out will be through the west entrance.

III. Asphalt Plant Operations

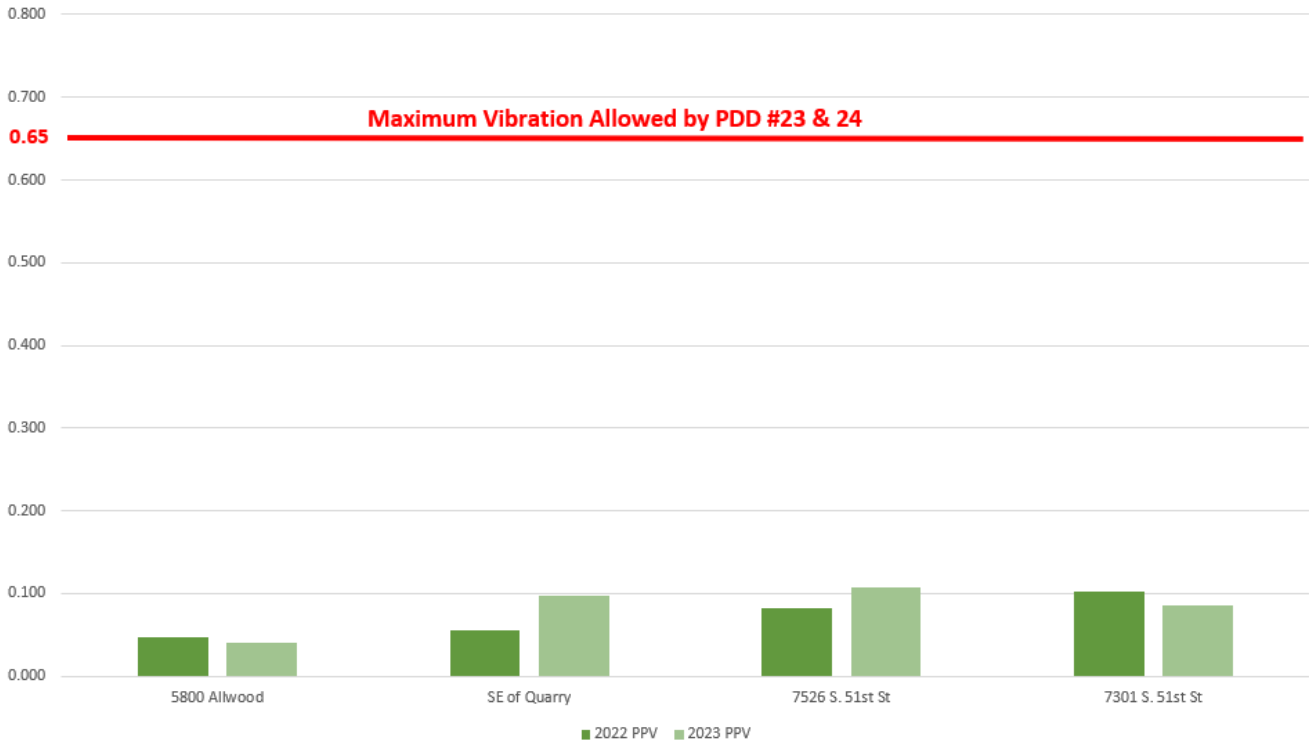
- There are two asphalt plants on site currently owned and operated by Payne & Dolan. The east asphalt plant was purchased by Payne and Dolan from Black Diamond in 2014.
- The west asphalt plant operates on PDD #23 and utilizes the west entrance. The east asphalt plant operates on PDD #24 and utilizes the east entrance.
- Asphalt plant operations may be conducted from 6:00 AM – 7:00 PM Monday thru Friday, 6:00 AM – 4:00 PM on Saturdays and no operation on Sundays per their permit use approvals as specified in the PDDs.
- Asphalt plants typically operate from mid-April thru mid-November, but may vary with market conditions.

IV. Blasting Operations

- Payne & Dolan supervises, implements, and conducts its drilling and blasting program specifically designed for this site. Blasting events are designed at conservative levels and kept well within the limits established by the PDDs.
- All blasting is conducted by experienced personnel licensed with the State of Wisconsin.
- Hours of blasting are restricted to 8:00 AM to 4:00 PM – Monday thru Friday with no blasting taking place on Saturday, Sunday or holidays as listed in the PDDs.

- All blasting events are monitored by four (4) independently calibrated seismographs – operated by Vibra-Tech, a third party vendor.
- City of Franklin personnel and quarry monitoring consultant (Stantec) have access to Vibra-Tech’s seismograph information via a website.
- Stantec, the City of Franklin’s quarry monitoring consultant, has done independent blast monitoring of the quarry and their monitoring results are consistent with Payne & Dolan’s results and confirm that all blasting operations are within the PDD limits.

Average Blasting Results by Seismograph Location - PPV - (2022 - 2023)



V. Other

- Stantec continues to conduct quarry monitoring at the discretion of the City of Franklin Quarry Monitoring Committee.
- Payne & Dolan personnel regularly attends the Quarry Monitoring Committee meetings.
- Payne & Dolan personnel continue to provide site visits and tours of its operations to City officials and representatives from Stantec.
- At the request of neighbors, Payne & Dolan has a preblast notification process to provide advance notice to neighbors of a blast. The notification process entails sending interested parties a message the day of the blast by either text or email, informing them that blasting would be occurring that day. Currently, there are 54 people on the notification list.
- The Quarry Monitoring Committee recommended approval of the Franklin Aggregates Reclamation Plan and the City of Franklin Plan Commission approved the Reclamation Plan in October 2021. The City of Franklin Common Council subsequently approved the Reclamation Plan in November 2021. Payne & Dolan updated the reclamation financial assurance per the approved plan.

Figure 1. Site Map showing Property Lines, PDD Locations and Extraction Limits



Figure 2. Current Aerial Photo - (October 2023)



Figure 3. Limestone Extraction Areas (2022 – 2023 and 2024 – 2025)
*2024-2025 is a Projection only – subject to change and may vary at discretion of P&D



Figure 4. Site Map Showing Conceptual Reclamation Plan

