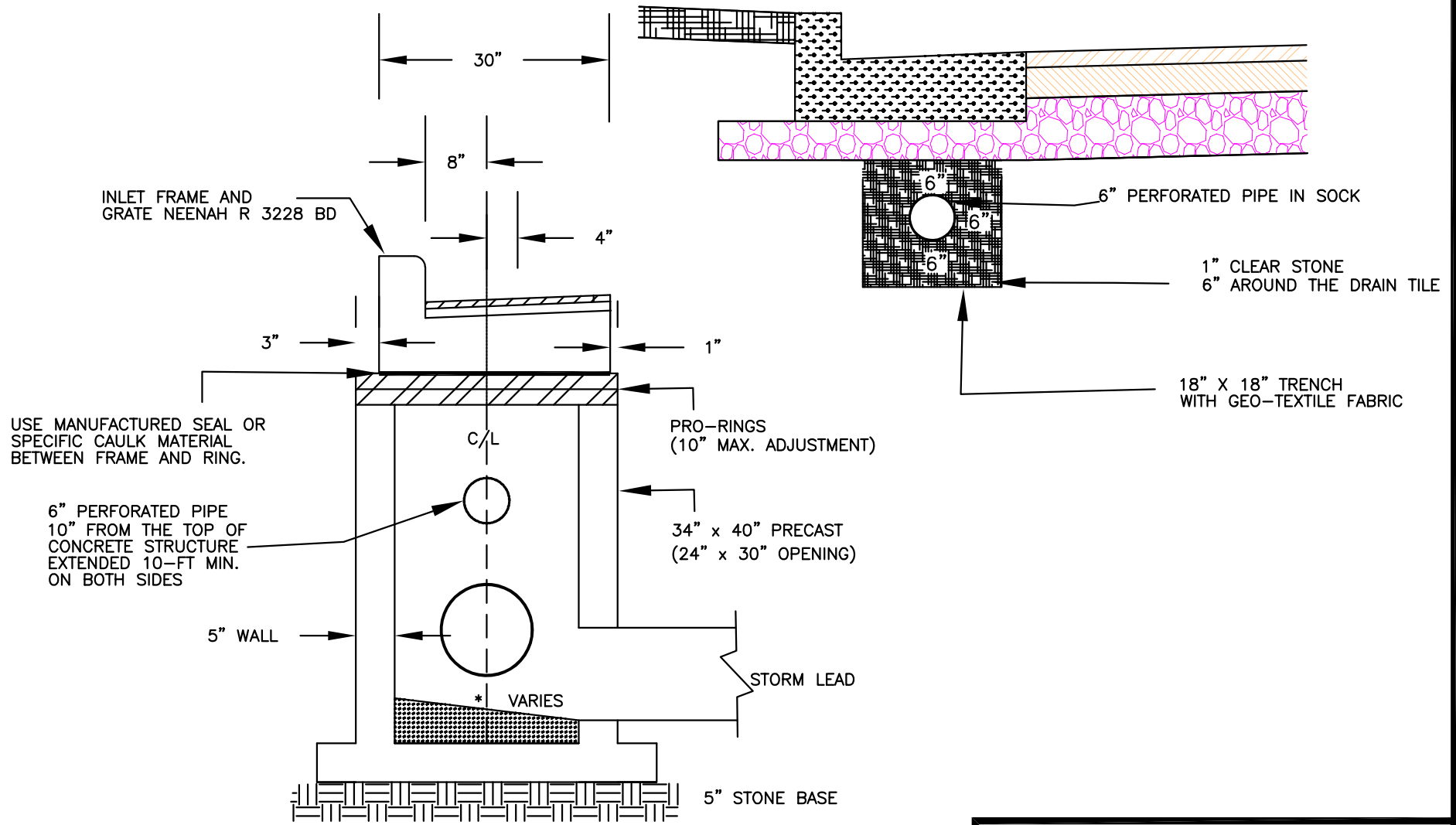


FIGURE 16-A



NOTE:

1. EXCAVATION FOR INLETS SHALL EXTEND AT LEAST 18 INCHES BEYOND EXTERIOR OF STRUCTURE ON THREE SIDES.
2. DRAIN OPENING SHALL BE MANUFACTURED OR FIELD CORED

STORM SEWER INLET
DETAIL w/ DRAIN TILE

FIGURE 16-A

FRANKLIN
ENGINEERING DEPT 10/2020 RA