

# 2021-2022 COMMUNITY HEALTH ASSESSMENT

**Franklin  
Health  
Department**



**Public Health**  
Prevent. Promote. Protect.



**HEALTH  
DEPARTMENT**

**THIS PAGE IS INTENTIONALLY  
LEFT BLANK**

# MESSAGE FROM OUR HEALTH OFFICER

The Franklin Health Department is dedicated to protecting and promoting health across the Franklin community. Public Health is everything and everything is public health. From the individual choices one makes and the environment we live in, to preventive services and local health related offerings, a thread runs from one to the next lacing together a puzzle of individual and community health. The Essential Public Health Services are at the core of what we do as the Franklin Health Department and we greatly value the input and ideas of the community we serve.

The Franklin Health Department has highlighted this Community Health Assessment cycle as an opportunity to complete a robust gathering of information to help paint a large picture of health related needs across Franklin. Through conversations, meetings, brainstorming, and collaborating, we continue to integrate our work across all sectors of the Franklin community and work alongside those who live, work, and play in Franklin to push forward towards optimal health together. The results from this Community Health Assessment cycle will lay the foundation for our community health improvement plan and for years of hard work ahead!



"Public Health is  
what we do  
together as a  
society to ensure  
the conditions in  
which everyone  
can be healthy"

Public Health 3.0, 2017

# TABLE OF CONTENTS

01.	Introduction.....	pg.3
02.	CHA Process & Timeline.....	pg.4
03.	Equity & Social Determinants of Health.....	pg.5
04.	Community Profile.....	pg.6
05.	Methods.....	pg.8
06.	Executive Summary.....	pg.9
07.	Health Behaviors & Outcomes.....	pg.14
08.	Economic Stability.....	pg.16
09.	Education Access & Quality.....	pg.17
10.	Health Care Access & Quality.....	pg.18
11.	Neighborhood & Built Environment.....	pg.20
12.	Social & Community Context.....	pg.22
13.	Acknowledgements.....	pg.24
14.	References.....	pg.27



# INTRODUCTION

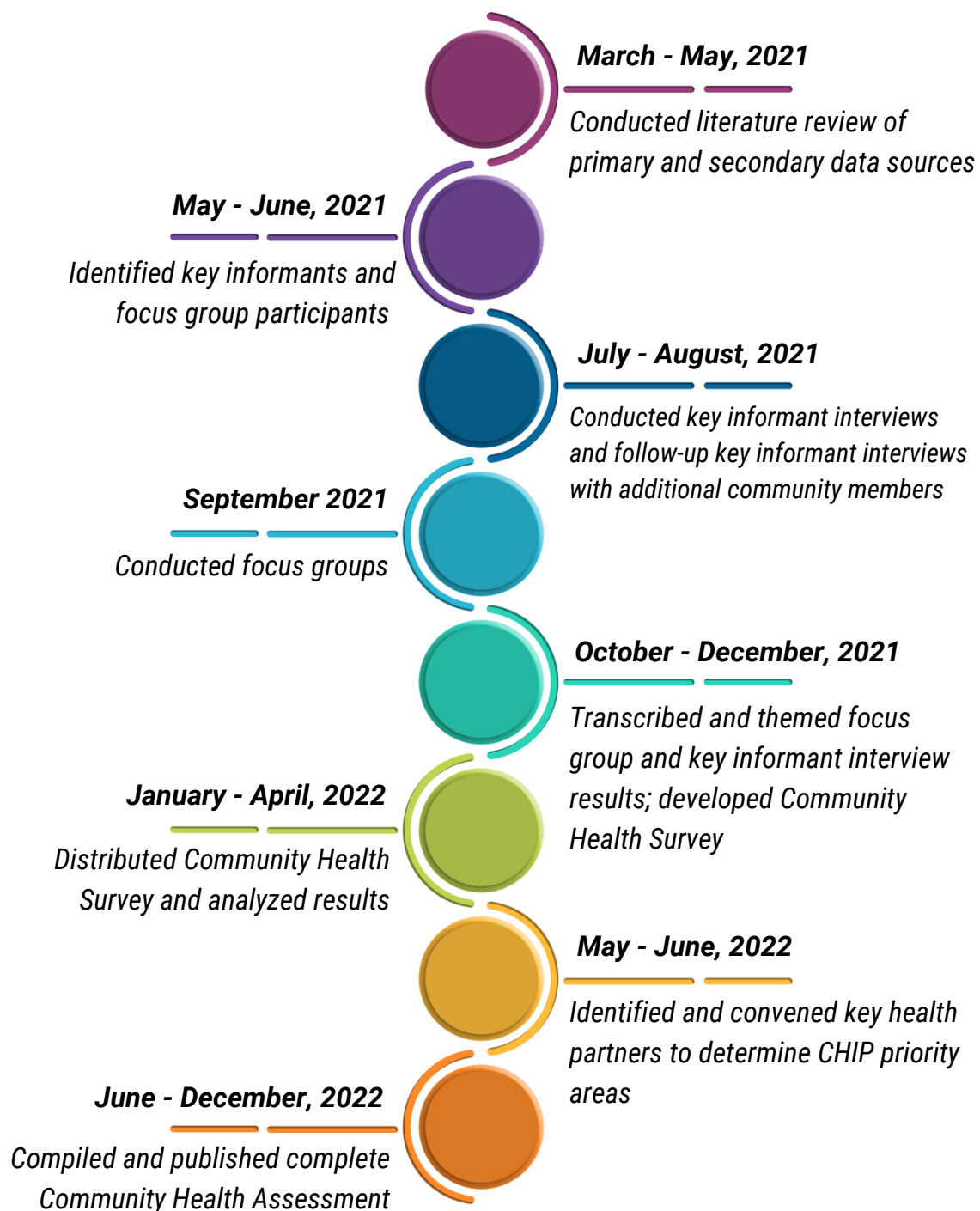
The purpose of a **Community Health Assessment (CHA)** is to inform the development and implementation of local health plans to address local health conditions effecting residents. In Wisconsin, **Chapter 251.05 WI Statute** and **WI Admin. Code Chapter DHS 140.04** requires Local Health Departments to complete local assessments of resident health every five years. Here in Franklin, we strive to complete the assessment cycle every three years. This ongoing process yields updated **Community Health Improvement Plans (CHIP)** to guide health efforts, collaboration, and areas of focus within our community.

The CHA and CHIP processes are Health Department led and community driven. Primary and secondary data sources are all taken into account to paint a picture of health in Franklin. For this CHA information gathering cycle, the leadership team completed a series of ***key informant interviews, focus groups, and community surveying***. Paired with pre-existing data, this information serves as a starting point for conversations with community members, leaders, and change makers, as we move forward for continued health in Franklin.

# CHA PROCESS & TIMELINE

The Community Health Assessment (CHA) process is led by the Franklin Health Department (FHD) once every 3-5 years with contributions and involvement from many partners across the community. Typically, the process takes one year to complete; however, with the ongoing response needs of the COVID-19 pandemic, our process was extended over the course of two years. We work collaboratively to **analyze** health data, **identify** community strengths and barriers to health, and **create** a plan to improve community health and wellness.

---

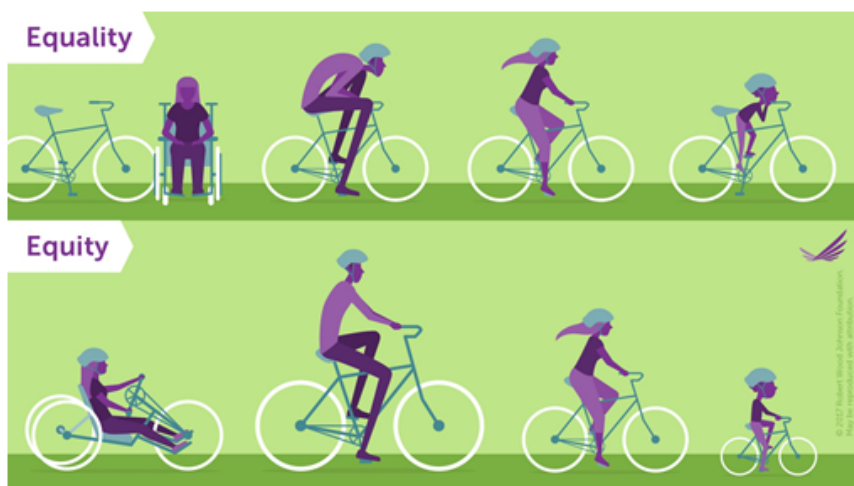


# EQUITY & SOCIAL DETERMINANTS OF HEALTH

The 2021-2022 Franklin Health Department CHA summary is broken into categories based on the social determinants of health identified in Healthy People 2030.

## HEALTHY EQUITY

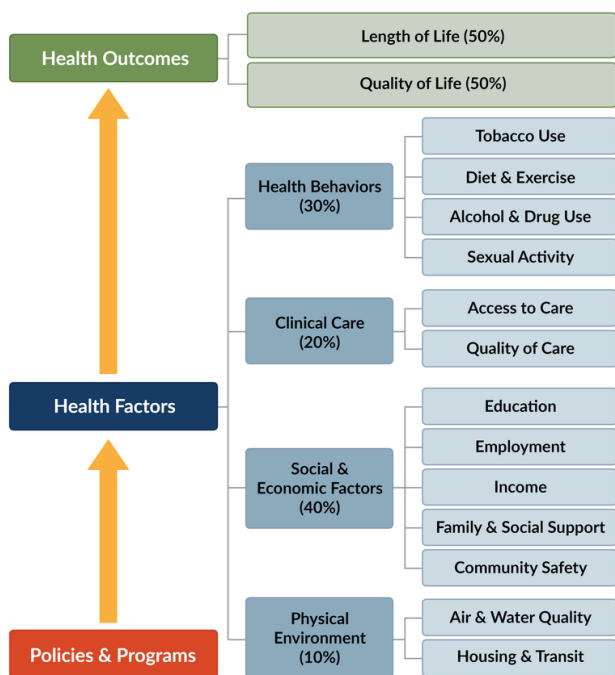
Equity means that everyone has a fair and just opportunity to access what they need to thrive.



This requires removing obstacles to health such as poverty, discrimination, and their consequences, including: powerlessness and lack of access to well-paying jobs, quality education and housing, safe environments, and health care.

## SOCIAL DETERMINANTS OF HEALTH

"Social determinants of health (SDOH) are the conditions in the environments where people are born, live, learn, work, play, worship, and age that affect a wide range of health, functioning, and quality-of-life outcomes and risks." - Healthy People 2030



County Health Rankings model © 2014 UWPH

### Social Determinants of Health



Social Determinants of Health  
Copyright-free

Healthy People 2030

# COMMUNITY PROFILE



The City of Franklin is a mid-sized suburban community located in the southwestern corner of Milwaukee County. Franklin has a large amount of greenspace with several well known City and Co. parks, trails, and nature centers. In addition to greenspace, Franklin has a unique mix of residential neighborhoods, agricultural land, and commercial development.

**Population**  
**36,816\***  
**Total Population**  
 Franklin is the 5th most populous municipality in Milwaukee County  
 \*2020 Census Data

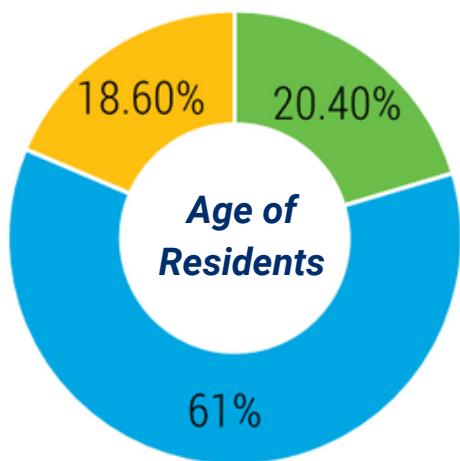
## Demographics

### Race/Ethnicity

- White - 81.6%
- Black or African American - 5.2%
- American Indian and Alaska Native - 0.5%
- Asian - 5.7%
- Two or More - 4.1%



**White Alone, Not Hispanic or Latino - 78.5%**  
**Hispanic or Latino - 6.3%**

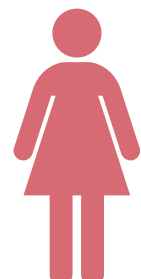


- Under 18
- 18-64
- 65+

### Sex



Male  
50.6%



Female  
49.4%





# COMMUNITY PROFILE

## Primary Language Spoken at Home



**87.6%** of the Franklin population speaks English at home.

Languages, *besides English*, spoken by Franklin Public School students at home: Arabic, Spanish (*Castilian*), Urdu, Punjabi, Telugu, and Chinese.

(Franklin Public School District, 2021)

## Families & Living Arrangements



Persons per Household:

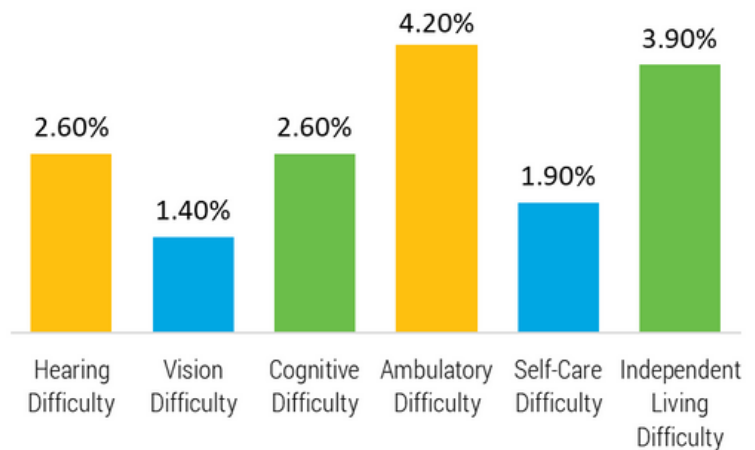
**2.47**



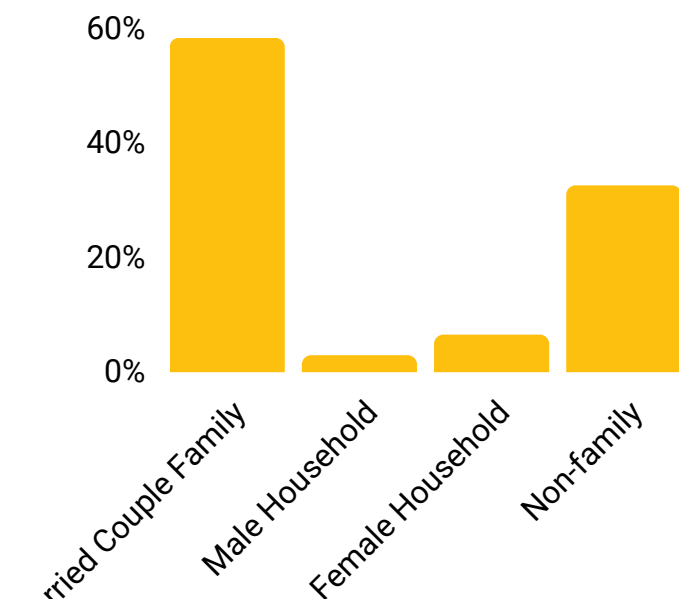
Average Family Size:

**3.01**

## Disability Status



American Community Survey, 2020 5-year estimates



American Community Survey, 2020 5-year estimates

*We acknowledge and honor that Franklin occupies the traditional land of the Potawatami people. We honor Elders of the past who have stewarded this land throughout generations, and Elders of the present and future who will do the same. May this acknowledgement demonstrate a commitment to working to dismantle ongoing legacies of inequities.*

# METHODS

The CHA leadership team completed 22 key informant interviews, 3 focus groups, and analyzed 330 community surveys completed by Franklin residents.

## 01 Key Informant Interviews

Key informant interviews were completed from July 2021- January 2022. Participants were individuals who live, work, and/or play in Franklin. Additional interviewees were gathered by means of a snowball sample (meaning individuals recommended to be apart of the process by a current interview participant).

Invitations were sent to over 30 individuals, inviting all different sectors from the community to have the opportunity to participate.

All key informant interviews were transcribed and common themes were identified.

## 02 Focus Groups

Key informant interviews identified four main subgroups within our city to contribute feedback to the CHA process. These groups included City Employees, School District Staff, Senior Citizens, and general community members.

Invitations were sent via email and via telephone call to recruit for each focus group. Lack of an adequate number of interested participants for the General Community member focus group resulted in cancellation of that group. Individuals who did sign up for the cancelled focus group were invited to share input through a key informant interview.

Each focus group was transcribed and common themes were identified.

## 03 Community Survey

**1,600 community surveys** were mailed to a random sample of Franklin residents. Sample criteria were: 1. Resident of Franklin and 2. At least 18 years of age. Individuals were provided an envelope with pre-paid postage to return the survey via mail, or the option to drop the completed survey off in the drop-box located outside of the main doors at Franklin City Hall. **330 surveys were returned fully completed and included in our survey results.**

# EXECUTIVE SUMMARY

## ***Key Informant Interviews & Focus Groups Summary***

Key informant and focus group findings indicate 2-6 main themes for each question posed during each session. Themes are classified as ideas which came up multiple times during participant discussion.

Questions	Theme(s)
<b>What barriers or challenges exist to improving health of residents in Franklin?</b>	<ul style="list-style-type: none"><li>• Availability of mental health services</li><li>• People's own will to be healthy</li><li>• Lack of public transportation</li><li>• Stigma (for a wide variety of issues)</li><li>• Lack of funds to address health</li></ul>
<b>What strengths or assets exist that support health improvement in Franklin?</b>	<ul style="list-style-type: none"><li>• Greenspace</li><li>• Presence of Local Health Department</li><li>• Social and Geographical Connectivity</li><li>• Collaboration</li></ul>
<b>What do you like most about living, working, or playing in Franklin?</b>	<ul style="list-style-type: none"><li>• Rural feeling</li><li>• Outdoor space</li><li>• Safety</li><li>• School System</li><li>• Maintenance of City</li><li>• Overall supportive and engaged community</li></ul>
<b>What else do you think would be important for us to know related to the health of our community?</b>	<ul style="list-style-type: none"><li>• People may overextend to try to fit in with social norms</li><li>• People may not be aware of changing demographics in community</li></ul>

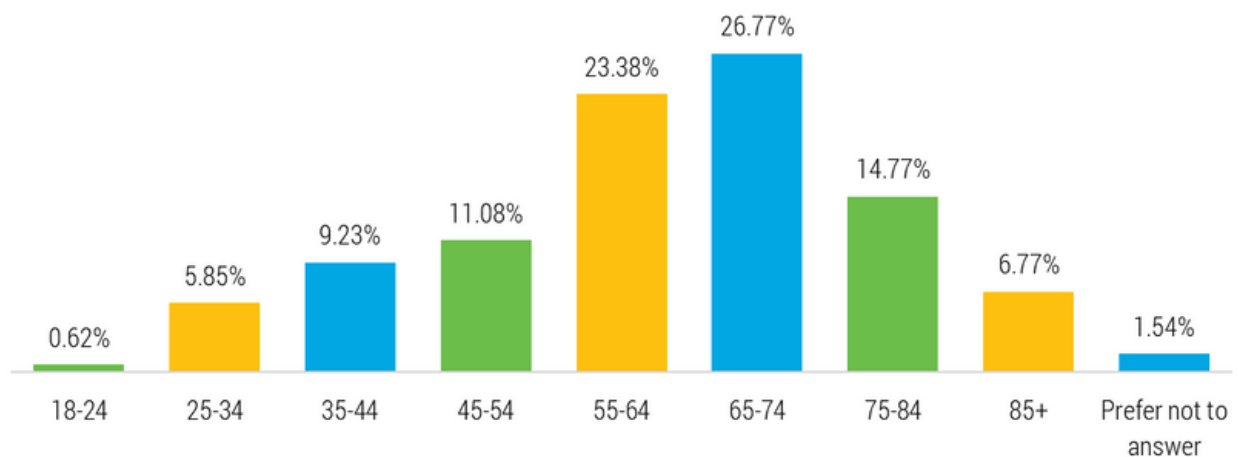
# EXECUTIVE SUMMARY

## Franklin Community Health Survey

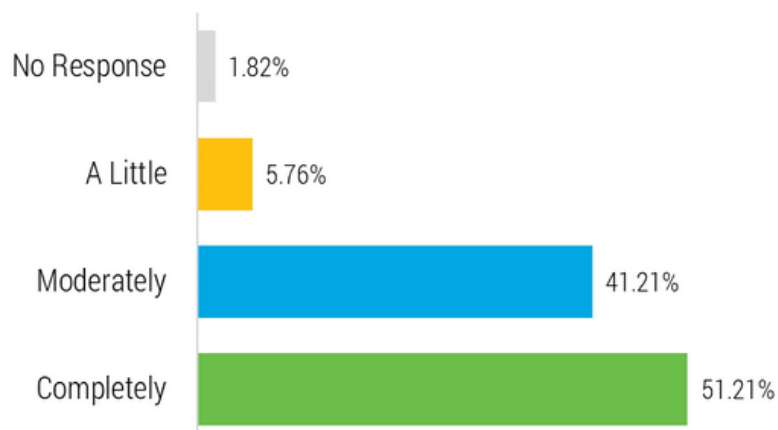
A community health assessment survey gives organizations comprehensive information about the community's current health status, needs, and issues. In turn, this information helps with developing a community health improvement plan by justifying how and where resources should be assigned to meet community needs.

**330** completed surveys were included in the survey review

### Age Distribution



### How in control do you feel about your own level of health?

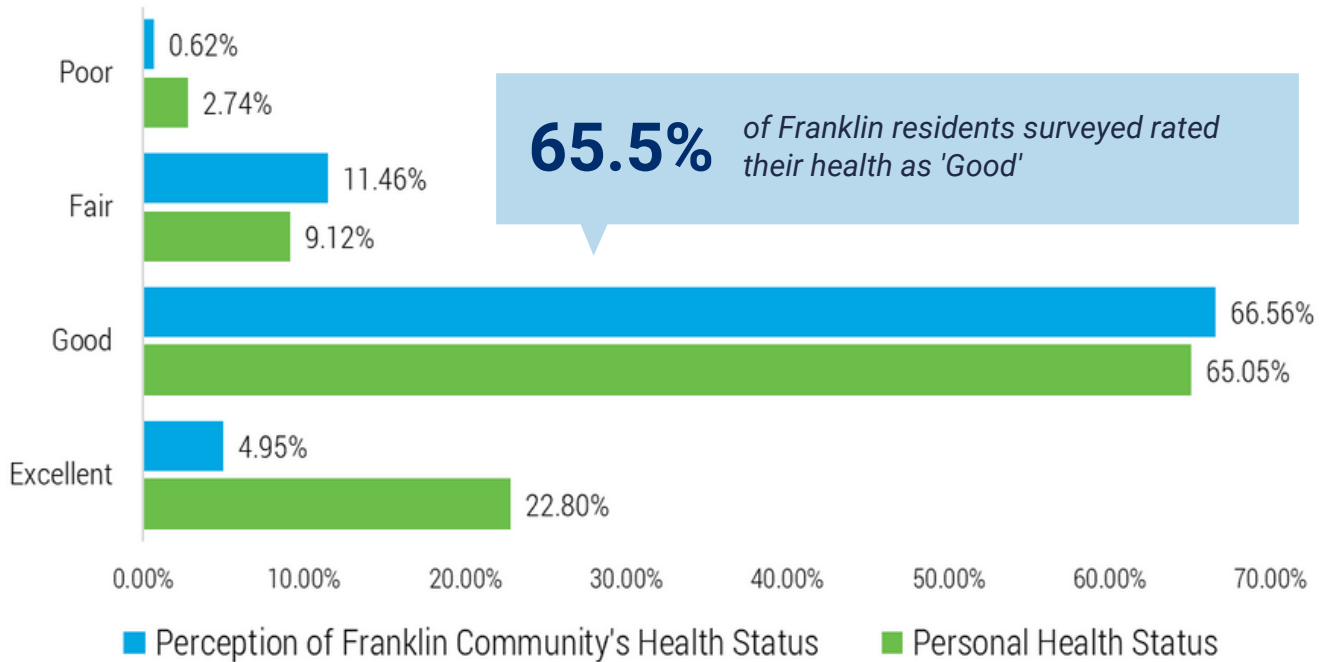


Franklin Community Health Survey, 2022.

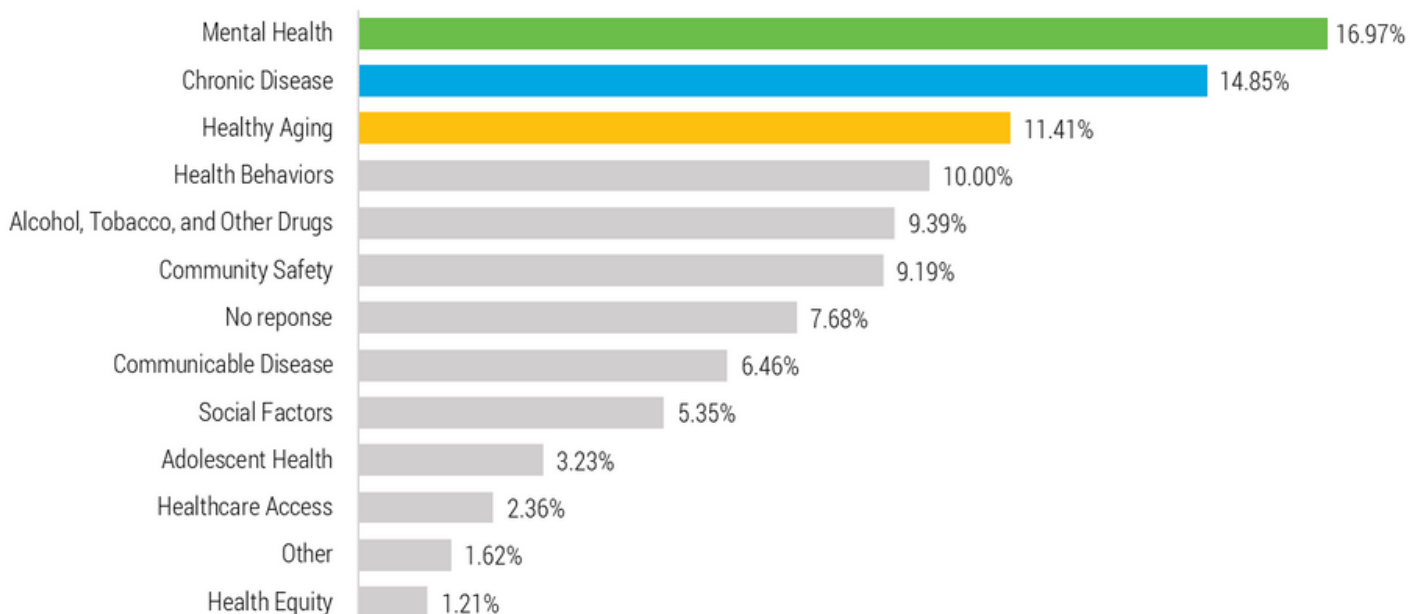
# EXECUTIVE SUMMARY

## Franklin Community Health Survey - Health Status & Important Issues

### Self-Reported Health Status in Franklin (n = 330)



### Most Important Identified Health Issues in the Franklin Community Health Survey





# EXECUTIVE SUMMARY

## Franklin Community Health Survey - Resources for Health

Greatest resources to **improving** and **maintaining** health in Franklin identified by Franklin residents (n= 330).



### **Healthcare:**

- Accessibility of health care
- Affordability
- Availability of healthcare facilities & professionals
- Free flu shots
- Good emergency response
- Hospitals
- Immunization clinics
- Multiple healthcare options



### **Parks & Trails:**

- Lots of greenspace
- Access to walking & biking paths
- Hiking trails
- Good parks & paths
- Oak Leaf Trail
- Varying parks and recreation areas



### **Community & Social Services:**

- Community Newsletter
- Community Education
- Franklin Public School District
- Family oriented community
- Franklin Health Department



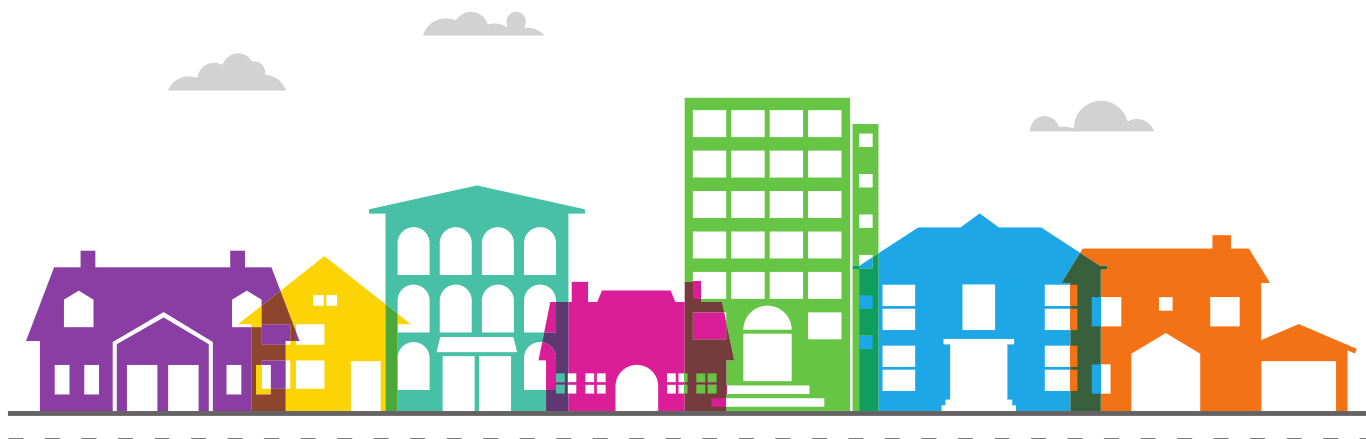
### **Exercise & Recreation:**

- Access to gyms
- Access to exercise opportunities
- Exercise programs
- Extra-curricular activities for adults & youth
- Fitness facilities
- Free indoor & outdoor exercise areas



### **Healthy Food & Environment:**

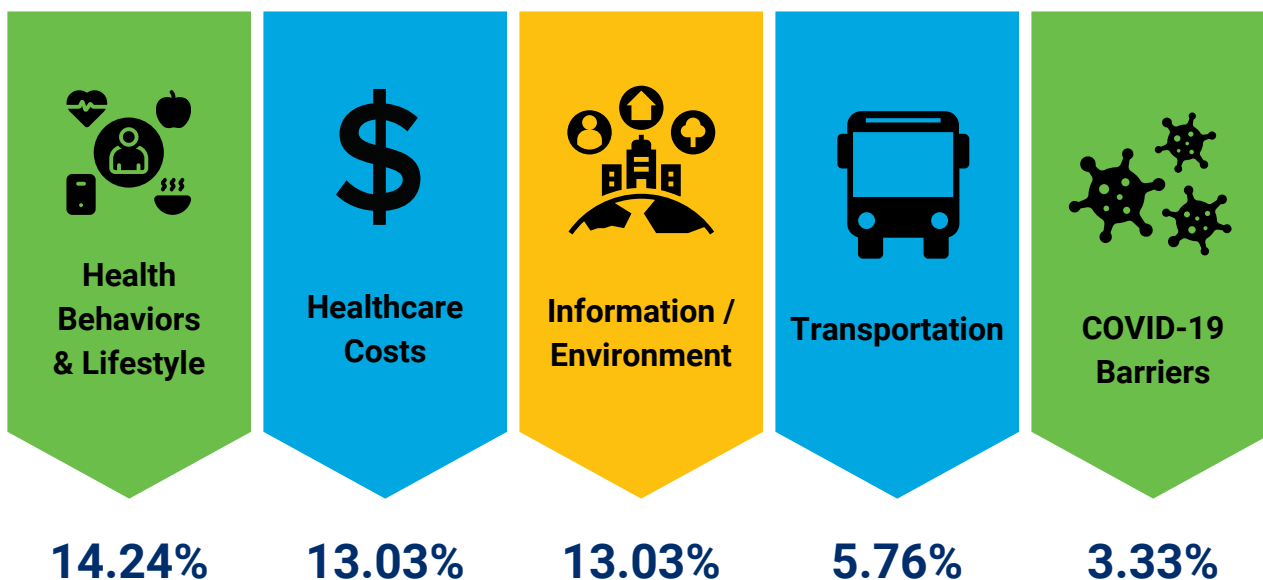
- Access to grocery stores
- Access to healthy foods
- Healthy restaurants
- Clean environment
- Drinkable/ good quality tap water
- Healthy food options in Franklin Schools
- Improved air quality



# EXECUTIVE SUMMARY

## Franklin Community Health Survey - Barriers to Health

Greatest barriers to *improving* and *maintaining* health in Franklin identified by Franklin residents. (n= 330)



\*50.61% of participants did not identify barriers to health in Franklin\*

- 

**Health Behaviors & Lifestyle** - "an individual's 'own will to be healthy'; personal initiative; poor nutrition; limited opportunity for exercise; poor quality sleep; people's attitude and beliefs about health; lack of motivation..."
- 

**Healthcare Costs** - "inadequate funding; no access to free/reduced healthcare options; expensive gyms; excess use and strain on emergency services; lack of insurance..."
- 

**Information / Environment** (*combined category*) - "lack of communication; weather (winter); well water safety; limited paths and sidewalks; lack of information on available resources, especially free ones; radon..."
- 

**Transportation** - "lack of transportation; lack of public transportation; limited public transportation; no transportation to visit parks or go to classes; lack of bicycle paths or running lanes; having to drive everywhere..."
- 

**COVID-19 Barriers** - "the pandemic in general; COVID-19 misinformation; uncertainty of the COVID-19 pandemic..."

# HEALTH BEHAVIORS & OUTCOMES

Healthy behaviors and preventative healthcare—such as annual checkups, dental visits, diet and exercise, alcohol/substance use, adequate sleep, and smoking cessation—helps reduce the risk of developing a chronic condition.

## Chronic Disease & Conditions

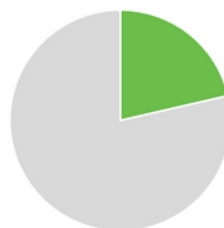
% of Adults with Chronic Conditions - CDC PLACES 2019	Cancer	Diabetes	Heart Disease	High Blood Pressure	High Cholesterol	Stroke
<b>Franklin</b>	6.7%	7.6%	4.9%	28.1%	33.6%	2.3%
<b>Milwaukee Co.</b>	6.0%	10.7%	5.8%	31.5%	32.3%	3.2%
<b>Wisconsin</b>	7.8%	8.7%	3.6%	31.0%	33.3%	2.6%

### Chronic Conditions in Franklin: Adults over 18

CDC PLACES, 2019



**Obesity**  
31.4%



**Arthritis**  
21.4%



**Asthma**  
8.7%

## Health Risk Behaviors

**14.5%** of Franklin residents 18 years old and above are current smokers.

CDC PLACES, 2020.

**16.7%** of Franklin residents 18 years old and above are physically inactive.

CDC PLACES, 2020.

**28.4%** of Franklin residents 18 years old and above get less than 7-hours of sleep a night

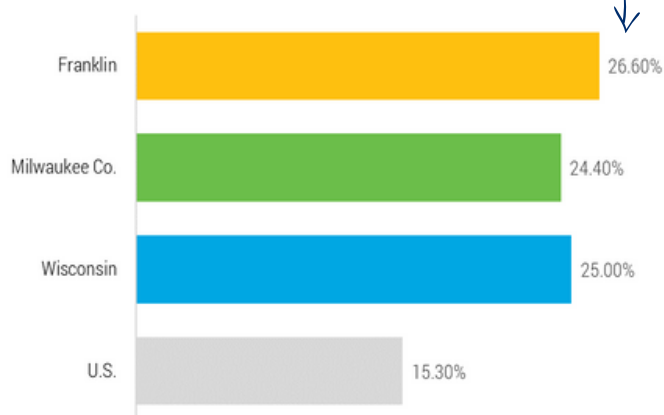
CDC PLACES, 2020.



Franklin has a higher adult binge drinking rate than Milwaukee County, Wisconsin, and the United States.

Health Compass Milwaukee, 2018-2020

### Binge Drinking Rates



# HEALTH BEHAVIORS & OUTCOMES

## Preventative Services

**73.7%** of Franklin residents 18 years and older had an annual checkup.

**76.2%** of Franklin residents 18 years and older had a dental visit.

**84.6%** of Franklin residents 18 years and older had a cholesterol screening.

**73.2%** of Franklin residents 18 years and older with high blood pressure took medication.

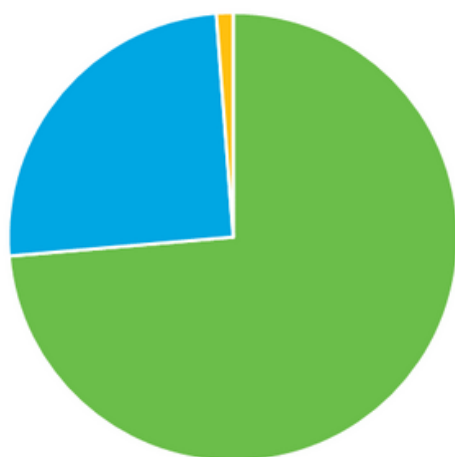
**44.8%** of Franklin male residents  $\geq 65$  years received preventative services.

**41.3%** of Franklin female residents  $\geq 65$  years received preventative services.

CDC PLACES, 2020.

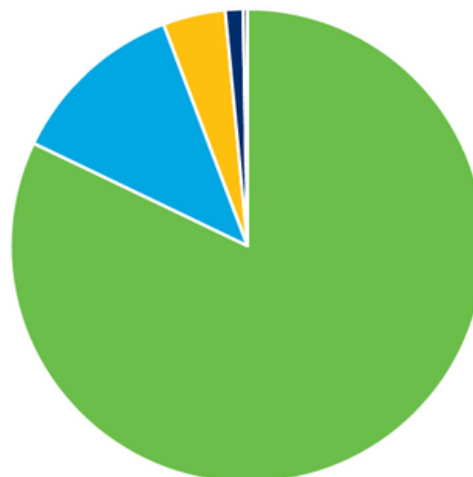
## Health Promotion Behaviors

***I am physically active for at least 30 minutes everyday.***



■ Yes - 73.6%  
■ No - 25.2%  
■ No Response - 1.2%

***It is easy to purchase affordable healthy food options.***



■ Yes - 82.1%      ■ No - 12.1%  
■ Don't Know - 4.2%      ■ No Response - 1.2%  
■ Not Applicable - 0.3%

Franklin Community Health Survey, 2022.

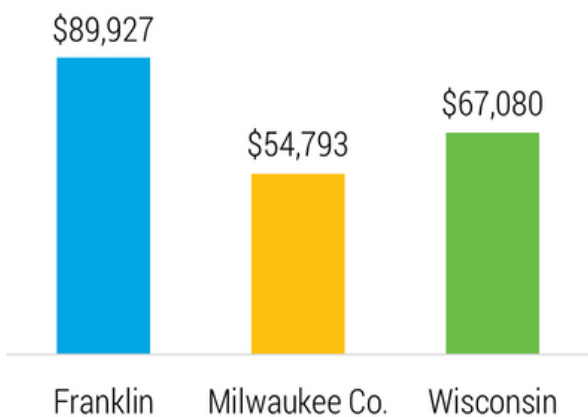
# ECONOMIC STABILITY

Economic stability plays a big role in the health of a community. People with steady employment are less likely to live in poverty and more likely to be healthy; however, for many people it can be difficult to find, or keep, a job. Additionally, many people with a steady job may still not earn enough to afford things they need to stay healthy.

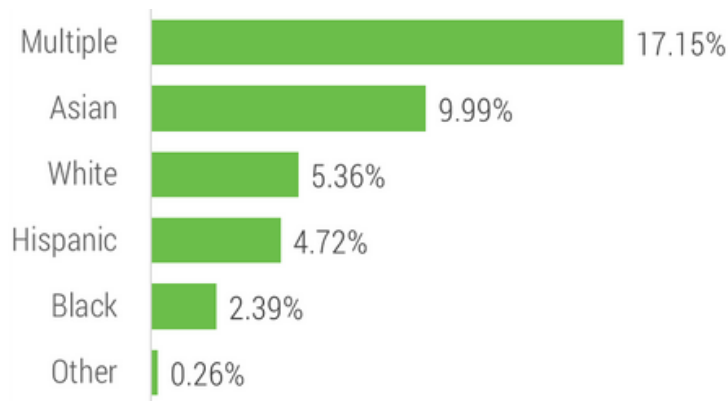
(Healthy People 2030, 2022)

Persons in Franklin experiencing poverty: **4.9%**

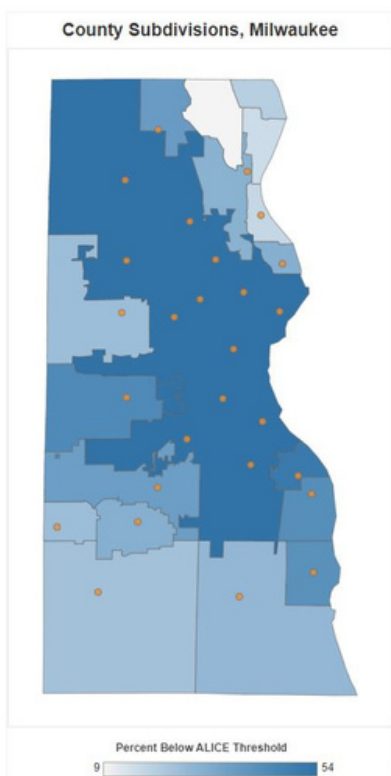
## Median Household Income



## Franklin Poverty by Race



American Community Survey, 2020 5-year estimates



## ALICE

Asset Limited Income Constrained Employed



**Asset Limited**  
ALICE has no safety net for emergencies



**Income Constrained**  
ALICE's income falls short of essentials



**Employed**  
ALICE is working, yet not earning enough

**17.9%** of households in Franklin are at or **BELOW** the ALICE threshold.



Milwaukee Health Compass, 2018.

United for ALICE, 2022.



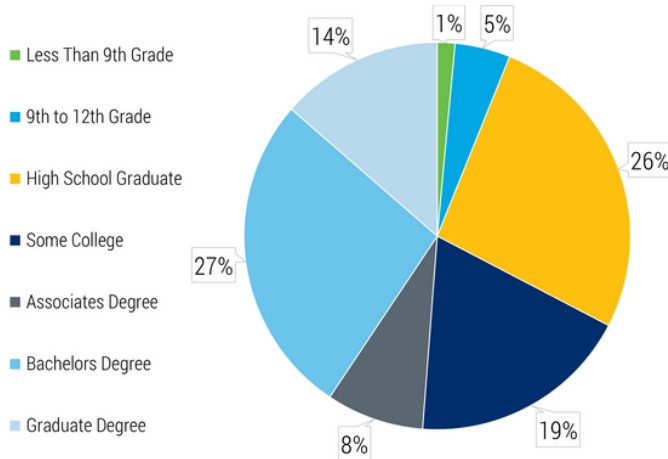
# EDUCATION ACCESS & QUALITY

People with higher education levels are more likely to live a healthy life and live longer. High quality educational opportunities improve health literacy, impacts future income and resources, helps teach healthy behaviors, and leads to healthier neighborhoods and communities.

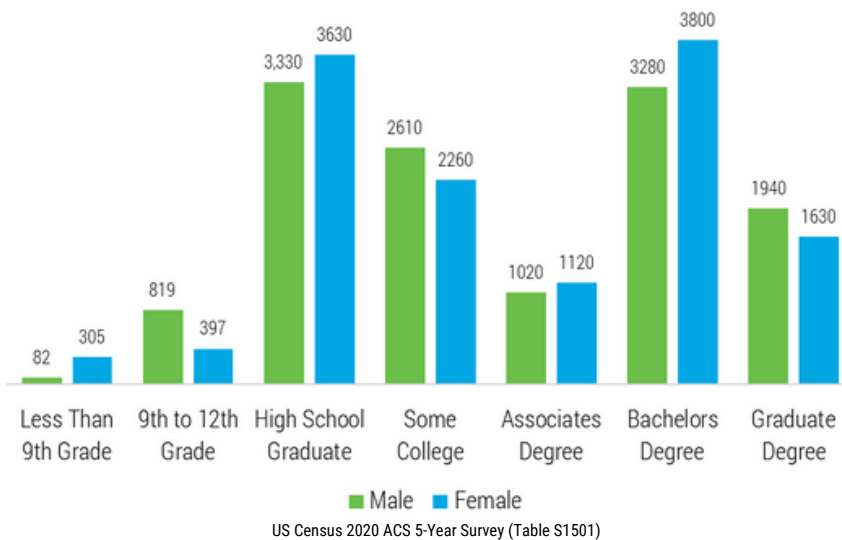
(Healthy People 2030, 2022)

## Educational Attainment

Highest Completed Level of Education (over age 25 population)

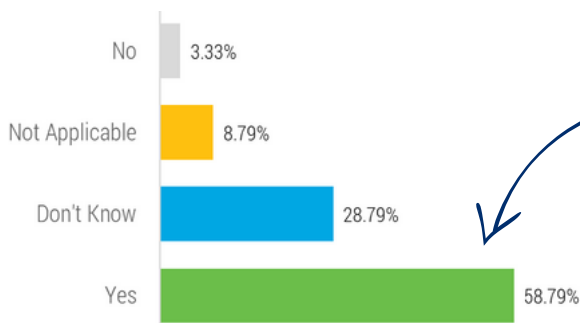


Highest Completed Level of Education by Sex (over age 25 population)



## Family Resources

**31.40%** of Franklin residents surveyed think there is a lack of access to affordable childcare resources for those that need them.



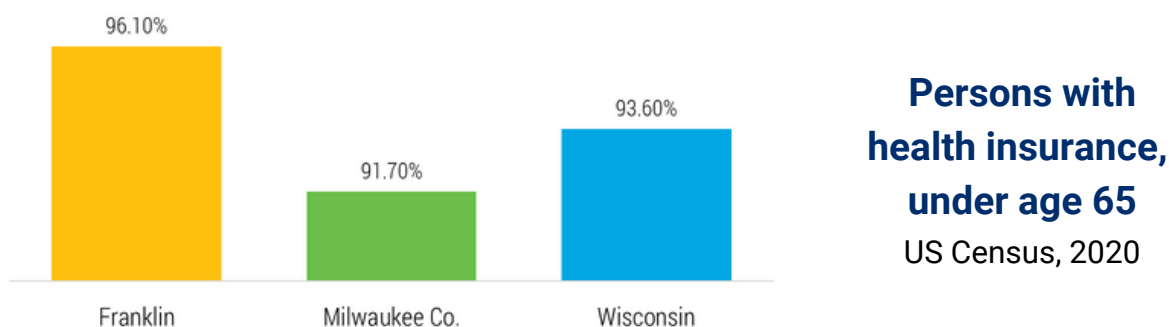
**58.79%** of Franklin residents surveyed agree K-12 schools in their community are well funded and provide good quality education.

Franklin Community Health Survey, 2022.

# HEALTH CARE ACCESS & QUALITY

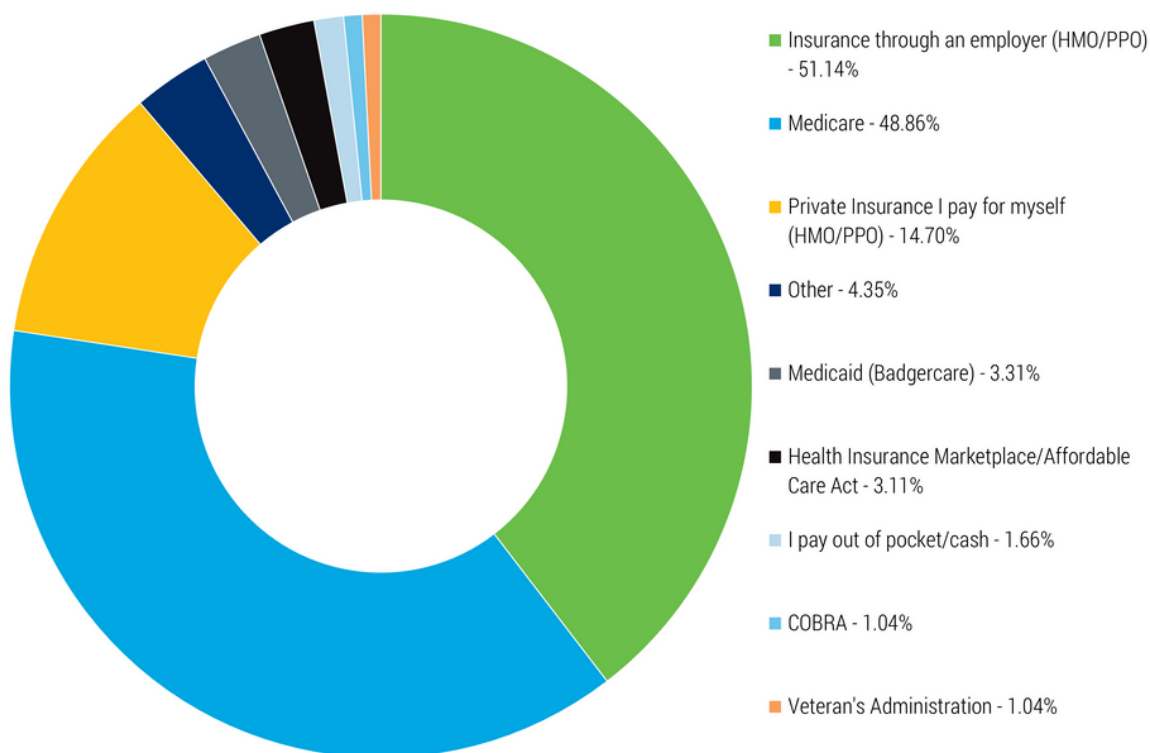
*In the U.S. many people do not get the health care services they need. This happens for a variety of reasons—from physical accessibility, to availability of transportation, to lack of financial means to pay for health care. Access to health care can improve the quality of life for many individuals through preventative care, early detection and treatment of health problems, and management of chronic conditions.*

*(Healthy People 2030, 2022)*



## Franklin Health Plans

**Franklin specific answers from the Milwaukee County Healthcare Partnership Survey:  
Which type(s) of health plans do you use to pay for your health care services?**



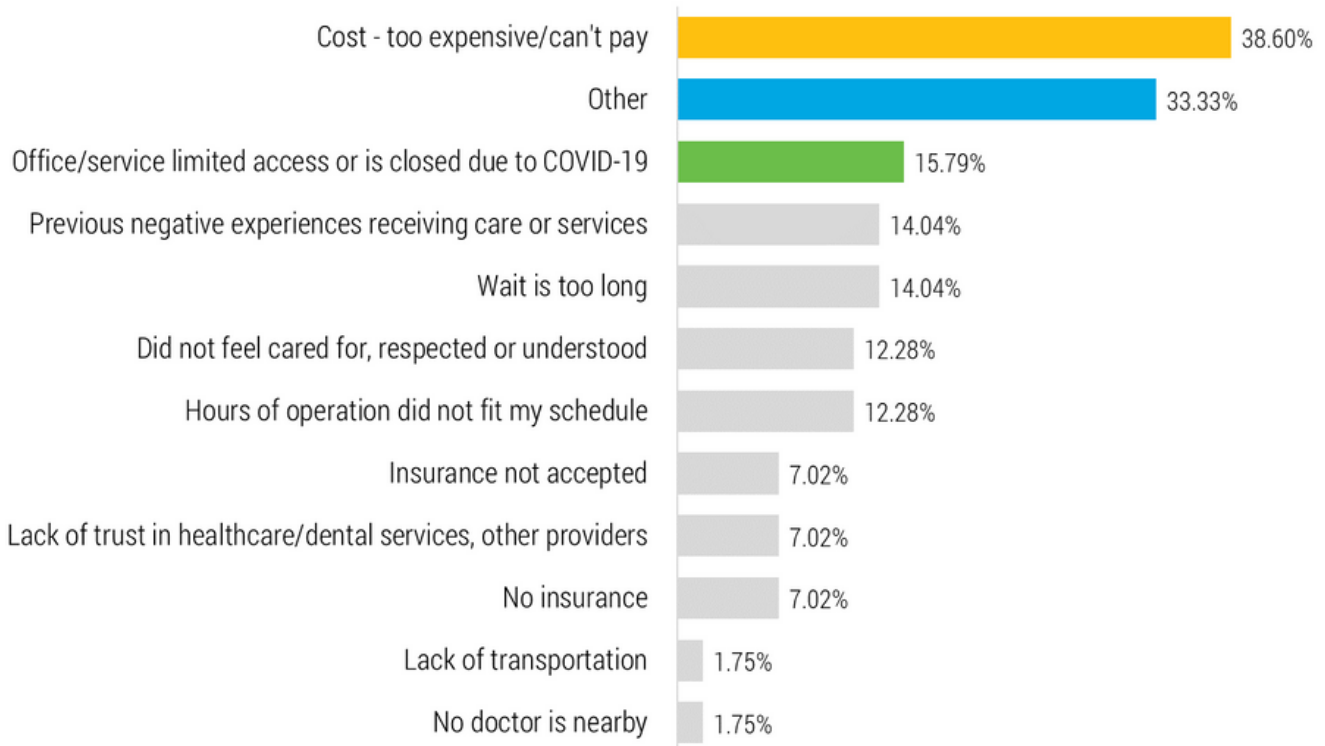
**\*\*Survey participants were able to select more than one answer\*\***

# HEALTH CARE ACCESS & QUALITY cont.

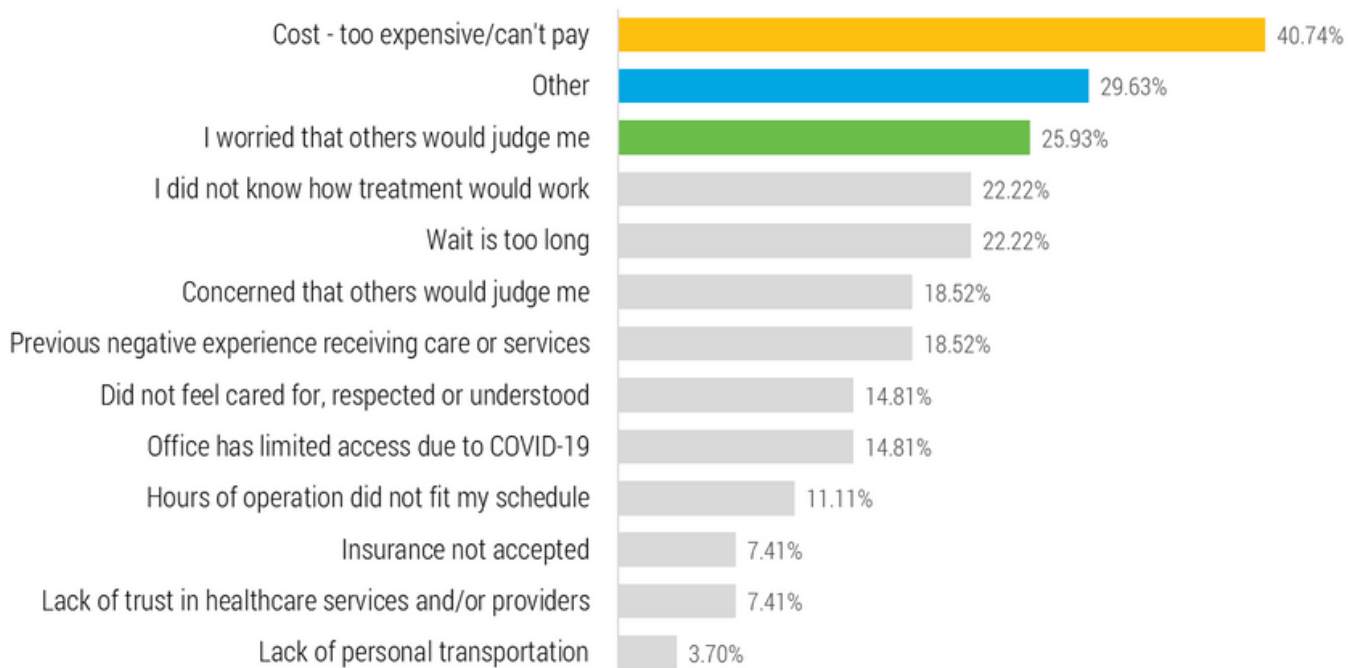
Franklin specific answers from the Milwaukee County Healthcare Partnership Survey:

## Reasons for not seeking...

### Health Care/Dental Care\*



### Mental Health Services & Alcohol/Substance Use Services\*



\*\*Survey participants were able to select more than one answer\*\*

# NEIGHBORHOOD & BUILT ENVIRONMENT

Housing is one of the top identified social determinants of health. Housing stability, conditions inside the home, affordability, and the neighborhood/environment people live in have a major impact on their health and wellbeing. Physical and structural housing conditions are more likely to negatively impact children, older adults, individuals with physical disabilities, and low-income individuals.

(Healthy People 2030, 2022)

## Neighborhood Statistics

- **Homeownership:**
  - 78.2% (Owner-occupied housing unit rate, 2016-2020)
- **Households (2016-2020):** 13,760
  - Persons per household, 2016-2020: 2.46
- **Median Value of owner-occupied housing units (2016-2020):** \$262,200
- **Renters:** 21.8%
  - **Median gross rent (2016-2020):** \$1,095
- **Renters spending 30% or More of Household Income on Rent (2016-2020):** 50.4%

US Census 2020, ACS 5-Year Survey (Table S1101)

## Walkability

**83.9%**

of Franklin residents surveyed **believe there are good sidewalks for walking and biking safely.**

**73.3%**

of Franklin residents surveyed **use sidewalks for walking and biking.**

Franklin Community Health Survey, 2022.



## Transportation

**14.8%** of Franklin residents report public transportation was available when they needed it.

**62.1%** of Franklin residents report it was easy to get around the community regardless of ability.

Franklin Community Health Survey, 2022.



**25.1 minutes**

Mean Travel Time to Work

**83.7%**

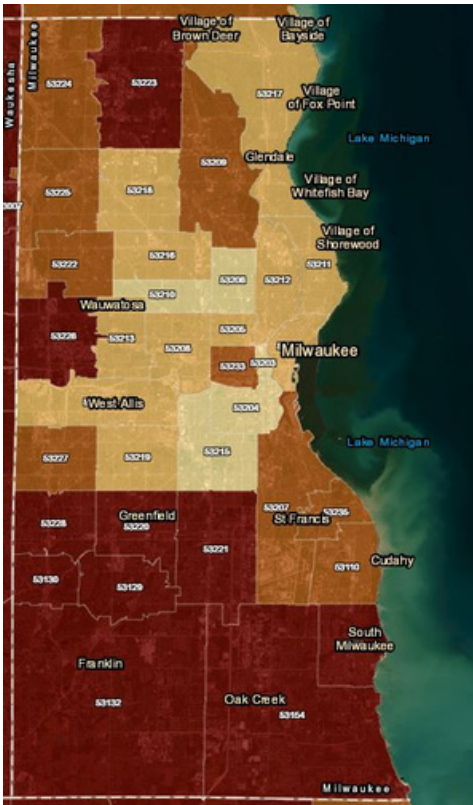
Workers who Drive Alone to Work

Health Compass Milwaukee, 2016-2020

# NEIGHBORHOOD & BUILT ENVIRONMENT CONT.

## Environmental Concerns

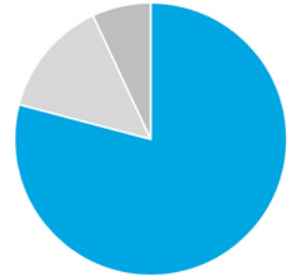
### WI Indoor Radon Test Results



### Radon in Franklin

> 50% of test results are greater than or equal to the EPA recommended limit (4.0 pCi/L).

Radon exposure is the **2nd** leading cause of lung cancer in the U.S.



**79%** of Franklin residents surveyed *believe the air & water quality is safe.*

Franklin Community Health Survey, 2022.



**92%** of Franklin residents surveyed *believe the streets are typically clean and buildings are well maintained.*

Franklin Community Health Survey, 2022.

(WI DHS, 2022)

## Parks and Trails

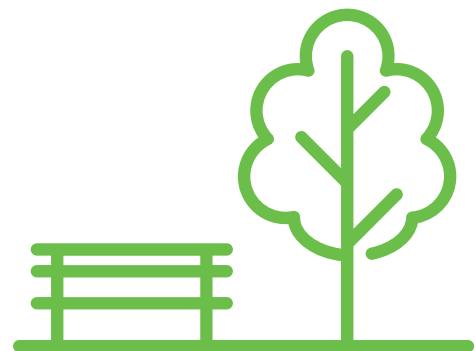
The Franklin Parks Department maintains **173 acres of land, 7 miles of bike trails, and 15 recreational facilities.** The City Parks include play equipment, playfields, play structures, ball diamonds, tennis courts, volleyball courts, and park buildings.

**91%** of Franklin residents surveyed *believe there are good parks and recreational facilities in their community.*

Franklin Community Health Survey, 2022.

**75%** of Franklin residents surveyed *report using the parks and recreational facilities in their community.*

Franklin Community Health Survey, 2022.





# SOCIAL & COMMUNITY CONTEXT

Relationships and interactions with family, friends, co-workers, and community members have a major impact on health and wellbeing. Social connection and a sense of belonging can help reduce anxiety, depression, and other mental health conditions. Helping people get the social and community support in the places they live, work, learn, and play is important for improving community health. (Healthy People 2030, 2022)



**65.96%** of Franklin residents surveyed **felt connected** to the Franklin community.  
Franklin Community Health Survey, 2022.

**92.12%** of Franklin residents surveyed feel their **neighbors are friendly**.  
Franklin Community Health Survey, 2022.



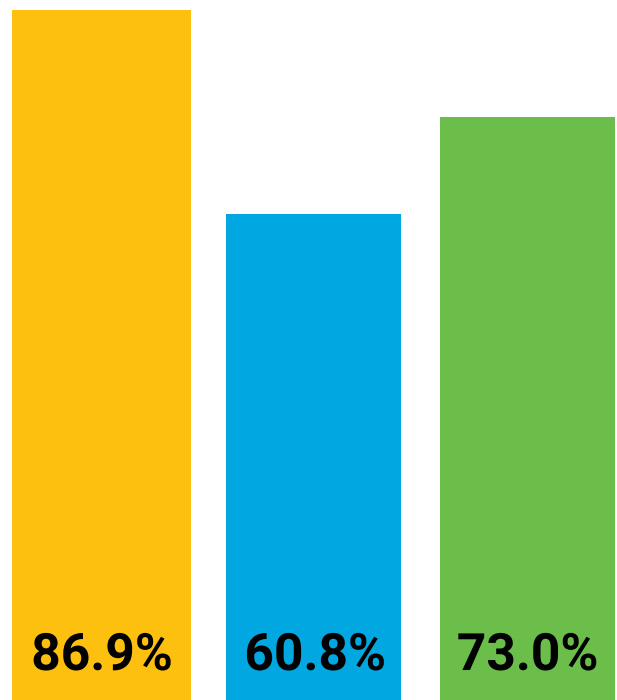
**91.9%** of households have a computer

**Report Feeling Seen and Listened to by...**



**88.1%** of households have a broadband internet subscription

US Census 2020 ACS 5-Year Survey (Table S1501)



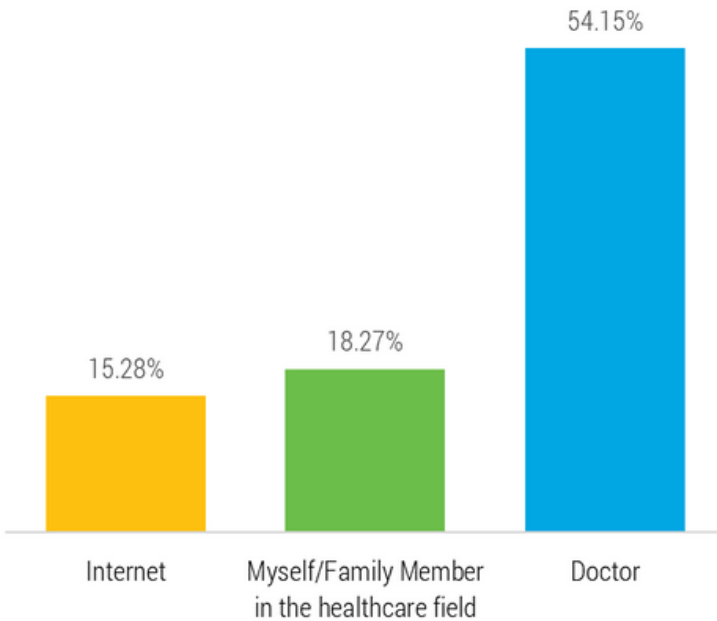
- Their own Healthcare Provider
- Their child/children's Healthcare Provider
- Their family or support person's Healthcare Provider

Franklin Community Health Survey, 2022.

# SOCIAL & COMMUNITY CONTEXT cont.

How individuals in Franklin are receiving their health information and what topics they may be reaching out for extra support.

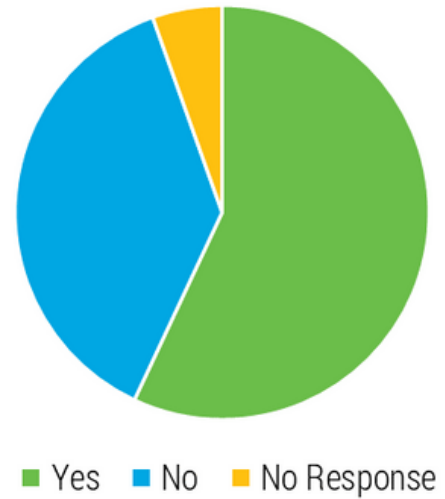
## Top 3 Sources for Health Information



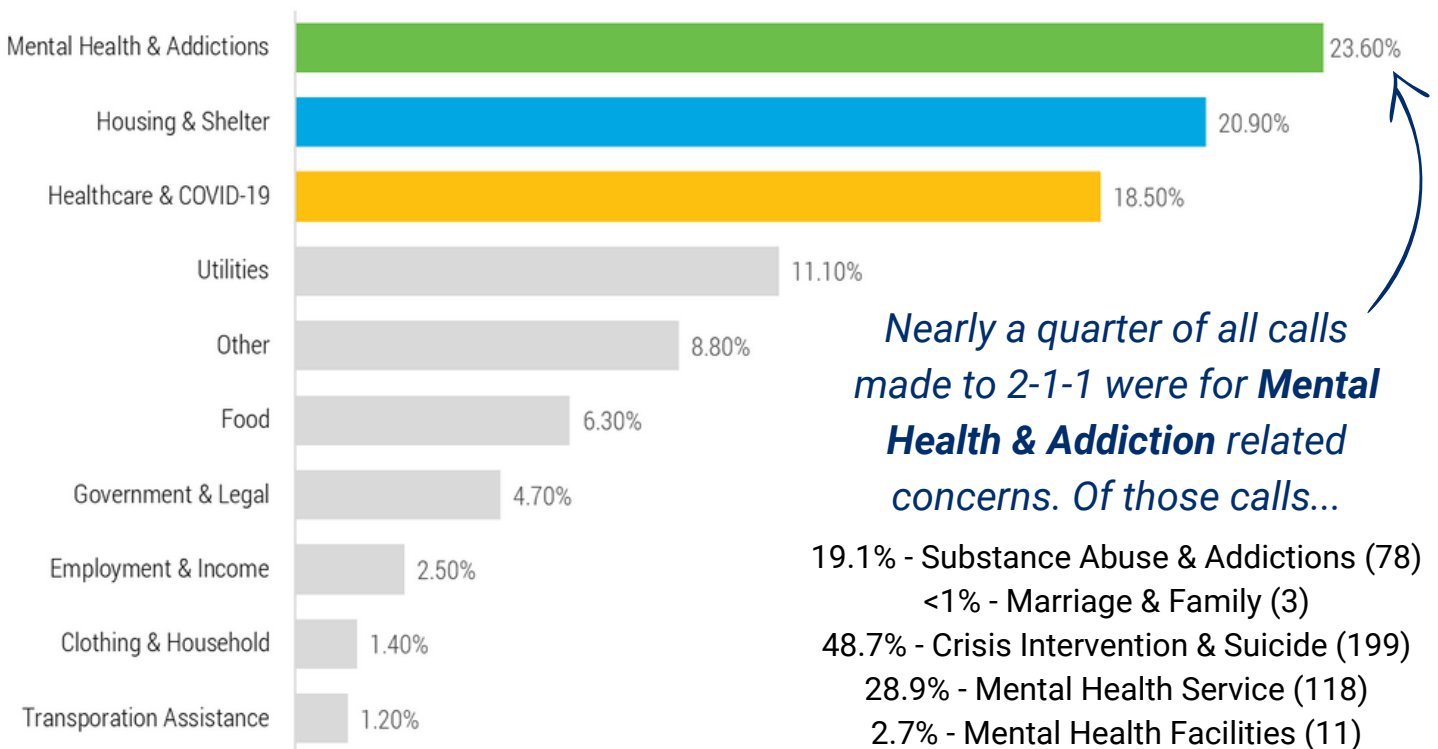
Franklin Community Health Survey, 2022.

## Do you feel seen/heard in the Franklin community?

Franklin Community Health Survey, 2022.



## 2021-2022 Calls to 2-1-1, 53132 Zip Code (1,736 Total Calls)



Nearly a quarter of all calls made to 2-1-1 were for **Mental Health & Addiction** related concerns. Of those calls...

- 19.1% - Substance Abuse & Addictions (78)
- <1% - Marriage & Family (3)
- 48.7% - Crisis Intervention & Suicide (199)
- 28.9% - Mental Health Service (118)
- 2.7% - Mental Health Facilities (11)

# **ACKNOWLEDGEMENTS**

The Franklin Health Department would like to express our gratitude for the dedication, time, and commitments of the community members and leaders within the City of Franklin who engaged in the Community Health Assessment (CHA) process. This diverse group of partners met to review data, share ideas, express concerns, and provide community context. Throughout the process, we have worked to identify the root causes and social determinants of health inequities, in order to improve health outcomes for the City of Franklin. Thank you for the valuable insight and input you provided!

## ***Community Partners***

Barbara Wesener | **Franklin Public Library Foundation**

Olha Schauer | **South Suburban Chamber of Commerce**

Sarah Stanton | **Franklin Resident**

Sue Malek | **Franklin Business Park Consortium**

Beth Patton | **Faith Presbyterian Church**

Carol Howard | **Friends of Wehr Nature Center**

Lisa Olson | **Whitnall School District**

Laura Gravander | **Franklin Public Library**

Michael Beyer | **Rogers Behavioral Health**

Mike Spragg | **Franklin Public School District Board of Education**

Richard Rabiega | **Polonia Sport Club**

Drinka Marinkovic | **Ascension Franklin**

Margie Bosanko | **St. James Food Pantry**

Lynn Tome | **City of Franklin Inspection Services**

Peggy Steeno | **City of Franklin Administration**

Doug Milinovich | **First Weber Realty, Noon Lions**

Trevor Poppe | **Franklin YMCA**

Glen Morrow | **City of Franklin Engineering**

Paige Prichard | **Mathnasium of Franklin**

Steve Olson | **City of Franklin Mayor**

Adam Remington | **Franklin Fire Department**

Gary Wallace | **Franklin Police Department**

## ***Community Partners cont.***

Calli Pilak | **Innovative Health & Fitness**

Shari Hanneman | **City of Franklin Common Council**

Susan Rabe | **Conservancy for Healing and Heritage**

Shiela Gansemer | **Midwest Orthopedic Specialty Hospital**

Carrie Berg | **MS Run the US**

Katie Delemont | **Country Dale Parent Teacher Organization**

Bev Bryant | **Wehr Nature Center, MKE Co Parks**

Shannon Anthoine | **Franklin Fire Department**

Judy Mueller | **Franklin Public School District**

Nevenka Lutzow Bralic | **Federation of Croatian Societies**

Bill Limmer | **Victory of the Lamb**

Fred Klimetz | **City of Franklin**

Henry Wengelewski | **Franklin Board of Health**

Lori O'Neil | **Franklin Public School District**

Jason Dropik | **Indian Community School**

Rick Oliva | **Franklin Police Department**

Ellen Henry | **Volition Franklin**

Molly Kaul | **Franklin Public School District**

Sarah Stoecker | **Franklin Public Library**

Michelle Runte | **Kayla's Playground**

Matt Wolter | **Franklin Resident**

Jan Litscher | **Faith Presbyterian Food Cupboard**

Ken Strzelecki | **Franklin Pediatrics**

Amy Marzofka | **Franklin Board of Health**

Calli Berg | **Franklin Economic Development**

Jim Luckey | **Franklin Historical Society**

Jonathan Misirian | **Southbrook Church**

## Franklin Public Health Department Team

An additional thank you to the **Franklin Health Department team members** and **volunteers** for your hard work throughout the CHA process!

### Franklin Health Department 2022 Team

**Lauren Gottlieb, MPH, CHES®**  
Health Officer

**Angela Beyer, RS**  
Environmental Health Specialist

**Jamie Kinzel, RS, MPH**  
Environmental Health Specialist

**Ellen Henry, CHES®**  
Public Health Specialist

**Megan Conway, CHES®**  
DFC Coalition Coordinator

**Christian Nwabueze**  
Epidemiologist

**Kim Buelow, BSN, RN**  
Public Health Nurse

**Carol Sibilski, BSN, RN**  
Public Health Nurse

**Amy Kremski, BSN, RN**  
Public Health Nurse

**Jamie Kopera, BSN, RN**  
Public Health Nurse

**Allie Crissey**  
Administrative Clerk

**Sarah Stanton**  
Student Intern

### Franklin Board of Health

**Alderman Mike Barber**

**Dr. Henry Wengelewski, DDS, Chair**

**Wayne Hustad**

**Amy Marzofka**

**Patricia Nissen**

**Dr. Patricia Golden, MD, Medical Advisor**

**Lauren Gottlieb, MPH, CHES®, Health Officer**



**Public Health**  
Prevent. Promote. Protect.

# REFERENCES

- 2020: American Community Survey 5-Year Estimates for Franklin. <https://data.census.gov/all?q=Franklin+city,+Wisconsin>.
- 2-1-1 Wisconsin. (2022). 2-1-1 Counts. <https://wi.211counts.org/>.
- Centers for Disease Control and Prevention, National Center for Chronic Disease Prevention and Health Promotion, Division of Population Health. BRFSS Prevalence & Trends Data [online]. 2015. URL: <https://www.cdc.gov/brfss/brfssprevalence/>.
- City of Franklin. (n.d.). *Parks & Recreation*. <https://www.franklinwi.gov/Departments/Parks-Recreation.htm>.
- County Health Rankings Model. (2016). *County Health Rankings Model*. <https://www.countyhealthrankings.org/resources/county-health-rankings-model>
- Franklin Community Health Survey. (2022).
- Health Compass Milwaukee. (2018). *Franklin, WI*. <https://www.healthcompassmilwaukee.org/?module=indicators&controller=index&action=indicatorsearch&doSearch=1&showComparisons=1&l=206659>.
- Healthy People 2030, US Department of Health and Human Services, Office of Disease Prevention and Health Promotion. Retrieved from <https://health.gov/healthypeople/objectives-and-data/social-determinants-health>.
- Healthy People 2030, US Department of Health and Human Services, Office of Disease Prevention and Health Promotion. (2022). *Economic Stability*. <https://health.gov/healthypeople/objectives-and-data/browse-objectives/economic-stability>.
- Healthy People 2030, US Department of Health and Human Services, Office of Disease Prevention and Health Promotion. (2022). *Education Access and Quality*. <https://health.gov/healthypeople/objectives-and-data/browse-objectives/education-access-and-quality>.
- Healthy People 2030, US Department of Health and Human Services, Office of Disease Prevention and Health Promotion. (2022). *Health Care Access and Quality*. <https://health.gov/healthypeople/objectives-and-data/browse-objectives/health-care-access-and-quality>.
- Healthy People 2030, US Department of Health and Human Services, Office of Disease Prevention and Health Promotion. (2022). *Neighborhood and Built Environment*. <https://health.gov/healthypeople/objectives-and-data/browse-objectives/neighborhood-and-built-environment>.
- Healthy People 2030, US Department of Health and Human Services, Office of Disease Prevention and Health Promotion. (2022). *Social and Community Context*. <https://health.gov/healthypeople/objectives-and-data/browse-objectives/social-and-community-context>.



# REFERENCES CONT.

- Milwaukee County Healthcare Partnership. (2021). Milwaukee County Healthcare Partnership Survey, Franklin.
- PLACES. Centers for Disease Control and Prevention. Accessed January 16, 2023. <https://www.cdc.gov/places>.
- Tejada-Vera B, Bastian B, Arias E, Escobedo LA., Salant B. (2020). Life Expectancy Estimates by U.S. Census Tract, 2010-2015. National Center for Health Statistics. <https://www.cdc.gov/nchs/data-visualization/life-expectancy/> United for Alice. (2022). County Profiles - Wisconsin. <https://www.unitedforalice.org/county-profiles/wisconsin>.
- Wisconsin First Nations. (n.d.). *Tribal Lands Map*. <https://wisconsinfirstnations.org/map/>.
- US Census Bureau. (2021). QuickFacts, Franklin, WI. <https://www.census.gov/quickfacts/fact/table/franklincitywisconsin/PST045222>.
- US Census Bureau. (2021). American Community Survey 5-year estimates. Retrieved from Census Reporter Profile page for Franklin, WI. <https://censusreporter.org/profiles/16000US5527300-franklin-wi/>.
- UW Population Health Institute. (2019). The Burden of Binge Drinking in Wisconsin. <https://uwphi.pophealth.wisc.edu/wp-content/uploads/sites/316/2019/10/The-Burden-of-Binge-Drinking-in-Wisconsin-Full-Report-2.pdf>.
- Wisconsin Department of Health Services. (2022). Wisconsin Indoor Radon Test Results. <https://wi-dhs.maps.arcgis.com/apps/webappviewer/index.html?id=68f3a3e068854810b626d002ce47aff4>.

**THIS PAGE IS INTENTIONALLY  
LEFT BLANK**

# Franklin, WI Community Health Assessment

Published by:

City of Franklin Health Department

9229 W Loomis Rd

Franklin, WI 53132

414-425-9101

**Email:** [FranklinHealthDept@franklinwi.gov](mailto:FranklinHealthDept@franklinwi.gov)

**Website:** <https://www.franklinwi.gov/Departments/Health.htm>



HEALTH  
DEPARTMENT